



New Construction IC Air Tight GU10 Housing

3.5 inches

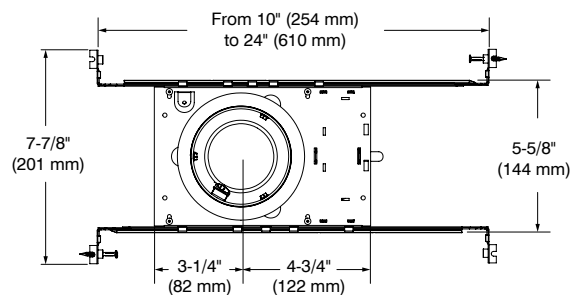
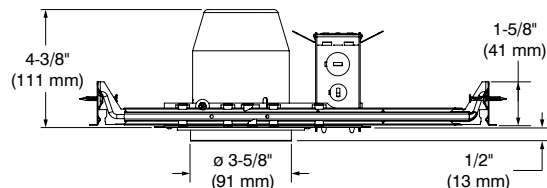
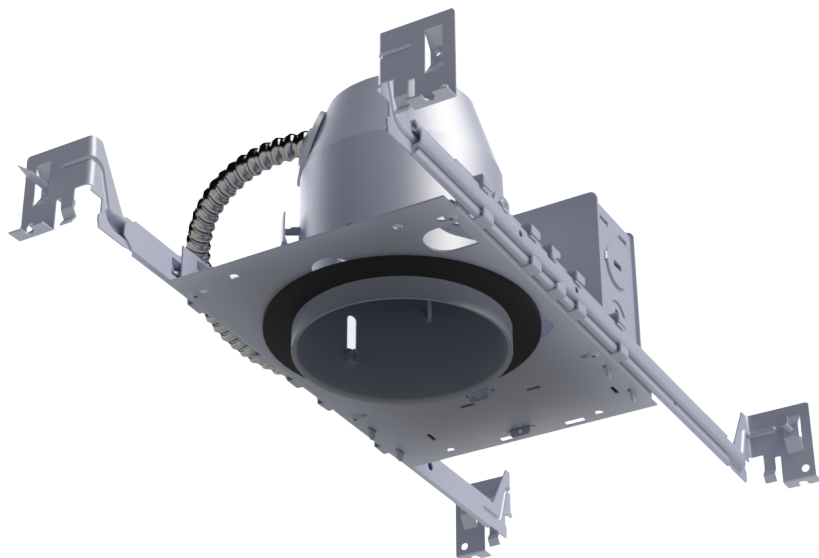
XN35GU10-L

Project _____

Notes _____

Fixture type _____

Date _____



SPECIFICATIONS

HOUSING DETAILS	Galvanized steel Approved for installation in insulated ceiling with direct contact to insulating material (except polyurethane) Below-ceiling accessible
SOCKET	GU10; Twist and Lock
JUNCTION BOX	Convenient 24 ³ in 1/2" and 3/4" romex wiring knockouts
MOUNTING	Cutout diameter: \varnothing 3-3/4" (96 mm) Can fit in ceilings of 1/2" (13 mm) up to 1-3/8" (35 mm) thick Requires a 5" (127 mm) clearance beyond the ceiling material No light leakage Adjustable Mounting Bars <ul style="list-style-type: none"> • 10" (254 mm) to 24" (610 mm) to fit in most ceiling structures • Contains integral nail • Hanger fit onto T-bar spline for quick alignment
SOURCE	LED GU10 Lamp 10W MAX
COMPATIBLE TRIMS	X3501 X3504 X3503 X3505
VOLTAGE	120V/277V



New Construction IC Air Tight GU10 Housing

3.5 inches

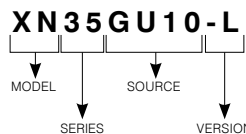
XN35GU10-L



SPECIFICATIONS (CONT'D)

CERTIFICATION	ETL listed for damp locations and wet with shower trim
WARRANTY	1 year limited warranty

CODIFICATION EXAMPLE



ORDERING CODES

MODEL	SERIES	SOURCE	VERSION
XN	35	GU10	-L
XN New Construction IC Housing	35 3-1/2" Series	GU10 GU10	-L