

SPECIFICATION SHEET

UR4G

4" Series

Round Wall Wash Trim

Project _____

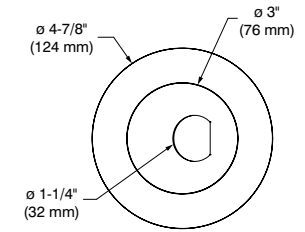
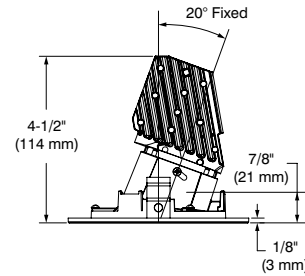
Notes _____

Fixture Type _____

Date _____



UR4GF-22AN (illustrated)



SPECIFICATIONS

LED MODULE

STANDARD (SOLID WHITE)

Lumileds Luxeon CoB 1203 GEN4

L₇₀ @ 50,000 hours of operation. 3-Step MacAdam ellipse (3 SDCM)

Color temperatures: 2,700K - 3,000K - 3,500K - 4,000K

CRI: 80+ (only 2,700K and 3,000K), 90+

Delivered Lumens: Performance 1 (10W) - 557 lumens @ 3,000K, 56 lm/W

Performance 2 (15W) - 726 lumens @ 3,000K, 48 lm/W

Performance 3 (24W) - 1,089 lumens @ 3,000K, 45 lm/W

Power supply (*determined by the choice of housing*): 120V, 277V or 120V/277V

Several driver models available in three performances (10W, 15W and 24W) offered in two dimming options:

ELV: 120V only 0-10V: 120V / 277V

Consult housing specification sheet for more details.

WARM DIMMING (WD)

LTF LED Module mimicking the halogen lamp dimming conditions by lowering color temperature from 3,050K at full intensity down to 1,800K at low-end while ensuring 90+ CRI throughout the whole process.

L₇₀ @ 50,000 hours of operation. 3-Step MacAdam ellipse (3 SDCM)

Color Temperature: 3,050K to 1,800K

CRI: 90+ (over the entire dimming range)

Delivered Lumens: Performance 1 (10W) - up to 325 lumens

Performance 2 (15W) - up to 425 lumens

Performance 3 (24W) - up to 625 lumens

Power supply (*determined by the choice of housing*): 120V, 277V or 120V/277V

Several driver models available in three performances (10W, 15W and 24W) offered in two dimming options:

ELV: 120V only 0-10V: 120V / 277V

Consult housing specification sheet for more details.

CEILING CUTOUT

ø 4-1/4" (108 mm)

ADJUSTABILITY

20° fixed tilt

CERTIFICATION

cULus **E343977** for damp locations

WARRANTY

1 year limited warranty on components against manufacturing defects

5-year limited warranty on LED arrays and drivers

CONTRASTE2020-10
Revision 6

PRINTED IN CANADA

1009, rue du Parc Industriel
Lévis (Québec) G6Z 1C5 Canada
Tel.: 1-888-839-4624
Fax.: 1-877-839-7057
contrastlighting.com
info@contrastlighting.com© 2020 Contrast Lighting M.L. Inc.
All rights reserved

Contrast Lighting M.L. Inc. reserves the right to make changes in specifications and/or to discontinue any product at any time without notice or obligation and will not be liable for any consequences resulting from the use of this publication.

UR4G

4" Series

Round Wall Wash Trim



SPECIFICATIONS (CONT'D)

COMPATIBLE HOUSINGS

	Remodel Housings	New Construction Housings	IC Housings
<p>Performance 1 10W</p> <p>Warm Dimming not compatible</p>	<p>IC Air Tight REUR4-120D1 REUR4-120E1 REUR4-277D1 REUR4-UV1</p>	<p>IC Air Tight NWUR4-120D1 NWUR4-120E1 NWUR4-277D1 NWUR4-UV1</p> <p>Non-IC Air Tight Emergency Driver NWUR4-120D1-EM NWUR4-120E1-EM NWUR4-277D1-EM NWUR4-UV1-EM</p>	<p>IC Air Tight ISUR4-120D1 ISUR4-120E1 ISUR4-277D1 ISUR4-UV1</p> <p>IC Air Tight Chicago Plenum and Polyurethane ISUR4-120D1P ISUR4-120E1P ISUR4-277D1P ISUR4-UV1P</p>
<p>Performance 2 15W MAX</p>	<p>Non-IC Air Tight REUR4-120D2 REUR4-120E2 REUR4-120EB2 REUR4-2772 REUR4-277D2 REUR4-UV2</p>	<p>Non-IC Air Tight NWUR4-120D2 NWUR4-120E2 NWUR4-120EB2 NWUR4-2772 NWUR4-277D2 NWUR4-UV2</p> <p>Non-IC Air Tight Emergency Driver NWUR4-120D2-EM NWUR4-120E2-EM NWUR4-120EB2-EM NWUR4-2772-EM NWUR4-277D2-EM NWUR4-UV2-EM</p>	<p>IC Air Tight ISUR4-120D2 ISUR4-120E2 ISUR4-120EB2 ISUR4-2772 ISUR4-277D2 ISUR4-UV2</p> <p>IC Air Tight Chicago Plenum ISUR4-120D2P ISUR4-120E2P ISUR4-120EB2P ISUR4-2772P ISUR4-277D2P ISUR4-UV2P</p>
<p>Performance 3 24W MAX</p>	N/A	<p>Non-IC Non-Air Tight NWUR4-UV3</p> <p>Non-IC Non-Air Tight Emergency Driver NWUR4-UV3-EM</p>	N/A

For dimming, please visit our Web site frequently to find our suggested compatible dimmers list:
www.contrastlighting.com

Contraste suggests ordering
**EB2 (ELV (+Value)/15W),
D2 (0-10V/15W)**
or
**UV2 (ELV/0-10V/15W) and
UV3 (ELV/0-10V/24W)**
dimming type and
performance to use
with Warm Dimming

CONTRASTE

2020-10
Revision 6

PRINTED IN CANADA

1009, rue du Parc Industriel
Lévis (Québec) G6Z 1C5 Canada
Tel.: 1-888-839-4624
Fax.: 1-877-839-7057
contrastlighting.com
info@contrastlighting.com

© 2020 Contrast Lighting M.L. Inc.
All rights reserved

Contrast Lighting M.L. Inc. reserves the right to make changes in specifications and/or to discontinue any product at any time without notice or obligation and will not be liable for any consequences resulting from the use of this publication.

SPECIFICATION SHEET

UR4G**4" Series****Round Wall Wash Trim**

SPECIFICATIONS (CONT'D)

TRIM	Powder coat painted or plated aluminum injected. Different finishes available: White (-01) , Brushed Chrome (-04BR) , Matte White (-11) , Brushed Nickel (-12BR) , Satin Nickel (-13) , Matte Black (-22) and Polar Grey (-25)				
REFLECTORS	PAINTED Natural Anodized Aluminum (AN) Matte White (11) Matte Black (22) (<i>suggested for an optimal result</i>)				
HEAT SINK	High quality aluminum injected heat sink ensuring maximum heat dissipation.				
OPTIC SYSTEM	Optical reflector and lens available to customize your lighting. Choice of available lenses: Frosted (F) - for uniform lighting distribution ensuring optimal results. Optical reflectors available: Flood <table border="1" style="margin-left: auto; margin-right: auto;"><thead><tr><th colspan="2" style="text-align: center;">Standard</th></tr></thead><tbody><tr><td style="text-align: center;">Flood (L)</td><td style="text-align: center;">65°</td></tr></tbody></table> * Average beams shown. Consult .ies files on our Website for more details.	Standard		Flood (L)	65°
Standard					
Flood (L)	65°				
ACCESSORIES	Goof Rings (see ordering code)				

CONTRASTE2020-10
Revision 6

PRINTED IN CANADA

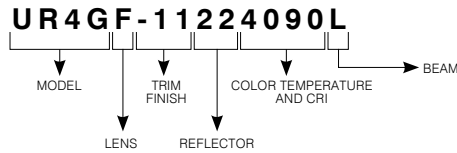
1009, rue du Parc Industriel
Lévis (Québec) G6Z 1C5 Canada
Tel.: 1-888-839-4624
Fax.: 1-877-839-7057
contrastlighting.com
info@contrastlighting.com© 2020 Contrast Lighting M.L. Inc.
All rights reserved

Contrast Lighting M.L. Inc. reserves the right to make changes in specifications and/or to discontinue any product at any time without notice or obligation and will not be liable for any consequences resulting from the use of this publication.

SPECIFICATION SHEET

UR4G**4" Series****Round Wall Wash Trim**

CODIFICATION EXAMPLE



Options in red may generate a longer production lead time.

ORDERING CODES

MODEL	LENS	TRIM FINISHES	REFLECTOR FINISHES	COLOR TEMPERATURE AND CRI	BEAM
UR4G	F				L
UR4G	F Frosted (std)	-01 White -04BR Brushed Chrome -11 Matte White -12BR Brushed Nickel -22 Matte Black -25 Polar Grey -13 <i>Satin Nickel</i>	PAINTED AN Natural Anodized Aluminum 11 Matte White 22 Matte Black <i>(suggested for an optimal result)</i>	2780 2,700K (80+ CRI) 3080 3,000K (80+ CRI) 2790 2,700K (90+ CRI) 3090 3,000K (90+ CRI) 3590 3,500K (90+ CRI) 4090 4,000K (90+ CRI) WD90 Warm Dimming 3,050K to 1,800K (90+ CRI)	L Flood (65°)
		<i>(-25 finish perfectly matches with AN reflector)</i>		<i>Compatible with 15W and 24W drivers only (EB2, D2, UV2 and UV3)</i>	

GOOF RINGS

Goof rings will help you fix larger than necessary or damaged ceiling cutouts.

Code: RR4-01 (white)
RR4-04BR (brushed chrome)
RR4-11 (matte white)
RR4-12BR (brushed nickel)
RR4-13 (satin nickel)
RR4-22 (matte black)
RR4-25 (polar grey)

Outside diameter: \varnothing 6-1/8" (156 mm)

Inside diameter: \varnothing 4-1/8" (105 mm)

CONTRASTE

2020-10
Revision 6

PRINTED IN CANADA

1009, rue du Parc Industriel
 Lévis (Québec) G6Z 1C5 Canada
 Tel.: 1-888-839-4624
 Fax.: 1-877-839-7057
 contrastlighting.com
 info@contrastlighting.com

© 2020 Contrast Lighting M.L. Inc.
 All rights reserved

Contrast Lighting M.L. Inc. reserves the right to make changes in specifications and/or to discontinue any product at any time without notice or obligation and will not be liable for any consequences resulting from the use of this publication.

SPECIFICATION SHEET

UR4G**4" Series****Round Wall Wash Trim**

PHOTOMETRIC DATA



In order to obtain the accurate photometric data, multiply the lumens relative to your product selection by the applicable factor(s). Take note these factors also need to be implemented in the .ies files available on our website.

WITH PERFORMANCE 1 HOUSING (10W)

	Flood (65°)	
2,700K with 80+ CRI	544 lm	54 lm/W
3,000K with 80+ CRI	557 lm	56 lm/W

2,700K with 90+ CRI	452 lm	45 lm/W
3,000K with 90+ CRI	467 lm	47 lm/W
3,500K with 90+ CRI	492 lm	49 lm/W
4,000K with 90+ CRI	507 lm	51 lm/W
Warm Dimming with 90+ CRI	325 lm	32.5 lm/W

Performance 1 Housings Factors	
XXUR-120E1	0.90
XXUR-120D1 or XXUR-277D1	1

Reflector Factors			
11	1	AN	0.99
22	0.97		

WITH PERFORMANCE 2 HOUSING (15W)

	Flood (65°)	
2,700K with 80+ CRI	708 lm	47 lm/W
3,000K with 80+ CRI	726 lm	48 lm/W

2,700K with 90+ CRI	589 lm	39 lm/W
3,000K with 90+ CRI	608 lm	41 lm/W
3,500K with 90+ CRI	642 lm	43 lm/W
4,000K with 90+ CRI	659 lm	44 lm/W
Warm Dimming with 90+ CRI	425 lm	28 lm/W

Performance 2 Housings Factors	
XXUR-120E2	0.95
XXUR-120EB2, XXUR-120D2, XXUR-2772 or XXUR-277D2	1

Reflector Factors			
11	1	AN	0.99
22	0.97		

CONTRASTE

UR4G

Série 4 po

Garniture ronde à éclairage mural

PHOTOMETRIC DATA



WITH PERFORMANCE 3 HOUSING (24W)

	Flood (65°)	
2,700K with 80+ CRI	1,063 lm	44 lm/W
3,000K with 80+ CRI	1,089 lm	45 lm/W

2,700K with 90+ CRI	883 lm	37 lm/W
3,000K with 90+ CRI	912 lm	38 lm/W
3,500K with 90+ CRI	962 lm	40 lm/W
4,000K with 90+ CRI	976 lm	41 lm/W
Warm Dimming with 90+ CRI	625 lm	26 lm/W

Reflector Factors			
11	1	AN	0.99
22	0.97		

CONTRASTE

2020-10
Révision 6

IMPRIMÉ AU CANADA

1009, rue du Parc Industriel
Lévis (Québec) G6Z 1C5 Canada
Tél. : 1-888-839-4624
Télééc. : 1-877-839-7057
eclairagecontraste.com/fr
info@contrastlighting.com© 2020 Éclairage Contraste M.L. Inc.
Tous droits réservés

Éclairage Contraste M.L. Inc. se réserve le droit de modifier les spécifications et/ou de discontinuer tout produit en tout temps et ne pourra être tenu responsable pour toutes conséquences résultant de l'utilisation de cette publication.

UR4G

4" Series

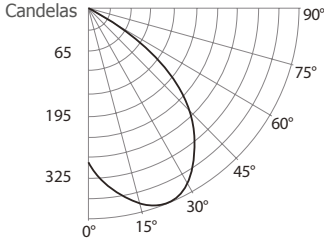
Round Wall Wash Trim

PHOTOMETRIC DATA



3,000K, 90+ CRI, Flood, Performance 1

CANDLEPOWER DISTRIBUTION



LIGHT CONE

Distance	FC	DIA
06'	7.7	7.6'
08'	4.4	10.1'
10'	2.8	12.7'
12'	1.9	15.2'
14'	1.4	17.8'
16'	1.1	20.3'

Beam: 64.8°
Beam Edge defined as 50% of Maximum Nadir Candle-power.

LUMINAIRE

Performance 1 LED	3,000K Flood	
CBCP / Lumens	279	/ 467.7
Watts	120V	277V
	10W	10.5W
Operating AMPS	0.08A	0.038A
Lumen Maintenance	L70 @ 50,000 Hrs	
CRI	90+	
Lumens/Watt	46.7	
Spacing Criteria	1.66	

COEFFICIENT OF UTILIZATION - %

Ceiling Reflect %	80		50		30		
Wall Reflect %	50	30	50	30	50	30	
RCR	0	119	119	111	111	106	106
	2	98	93	93	89	90	86
	4	80	73	77	71	75	70
	6	67	59	64	58	63	57
	8	57	49	55	48	54	48
	10	49	42	47	41	47	41

Zonal Cavity Method
Effective Floor Cavity Reflectance 20%

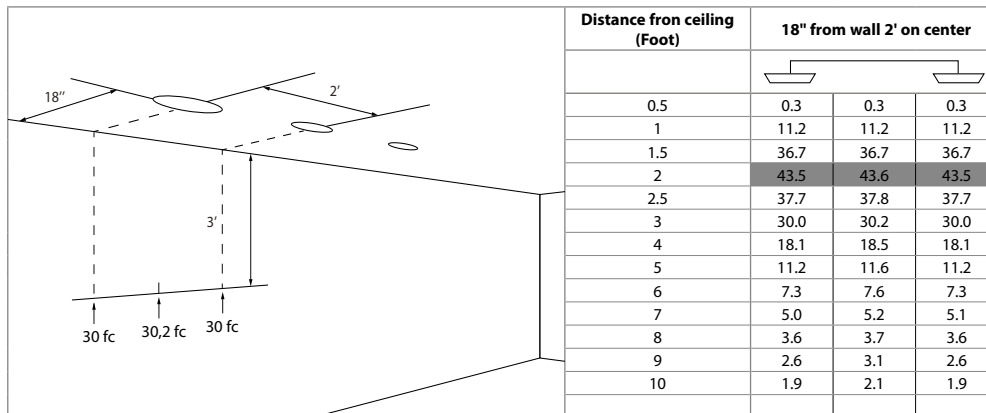
ZONAL LUMEN SUMMARY

ZONE	LUMENS	%LUMINAIRE
0-30	199.1	42.6%
0-40	306.9	65.6%
0-60	445.1	95.2%
60-90	22.6	4.8%
0-90	467.7	100%

CANDELAS DISTRIBUTION

DEGREES/ VERTICAL	CANDELAS
0	279
5	363
10	359
15	248
20	68
25	4
30	0

Footcandles On Wall - Performance 1



Note: Footcandles Data

UR4G

4" Series

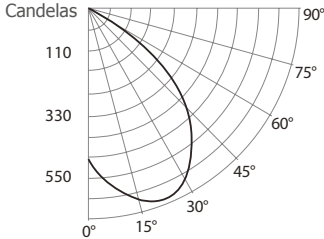
Round Wall Wash Trim

PHOTOMETRIC DATA



3,000K, 90+ CRI, Flood, Performance 2

CANDLEPOWER DISTRIBUTION



LIGHT CONE

Distance	FC	DIA
06'	13.1	7.6'
08'	7.4	10.1'
10'	4.7	12.7'
12'	3.3	15.2'
14'	2.4	17.7'
16'	1.9	20.3'

Beam: 64.7°
Beam Edge defined as 50% of Maximum Nadir Candle-power.

LUMINAIRE

Performance 2 LED	3,000K Flood	
CBCP / Lumens	473	/ 794.1
Watts	120V	277V
	15W	15.5W
Operating AMPS	0.12A	0.055A
Lumen Maintenance	L70 @ 50,000 Hrs	
CRI	90+	
Lumens/Watt	52.9	
Spacing Criteria	1.66	

COEFFICIENT OF UTILIZATION - %

Ceiling Reflect %	80		50		30		
Wall Reflect %	50	30	50	30	50	30	
RCR	0	119	119	111	111	106	106
	2	98	93	93	89	90	86
	4	80	73	77	71	75	70
	6	67	59	64	58	63	57
	8	57	49	55	48	54	48
	10	49	42	47	41	47	41

Zonal Cavity Method
Effective Floor Cavity Reflectance 20%

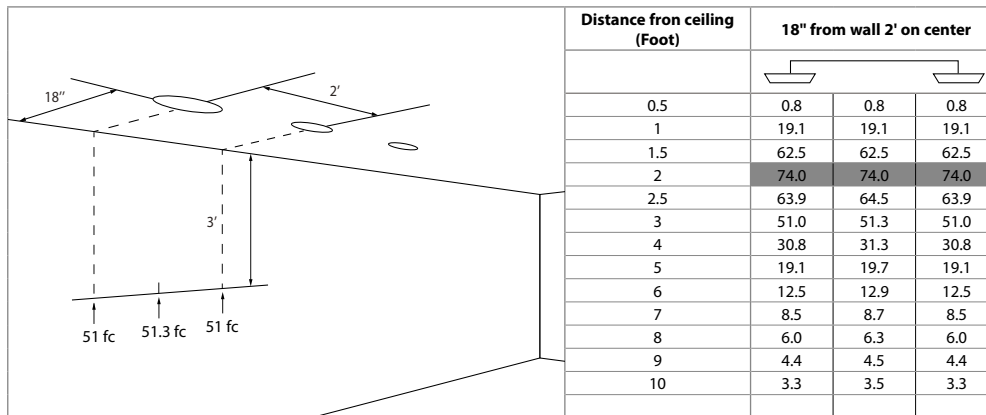
ZONAL LUMEN SUMMARY

ZONE	LUMENS	%LUMINAIRE
0-30	338.0	42.6%
0-40	521.1	65.6%
0-60	755.7	95.2%
60-90	38.4	4.8%
0-90	794.1	100%

CANDELAS DISTRIBUTION

DEGREES/ VERTICAL	CANDELAS
0	473
5	617
10	608
15	421
20	116
25	6
30	0

Footcandles On Wall - Performance 2



Note: Footcandles Data

UR4G

4" Series

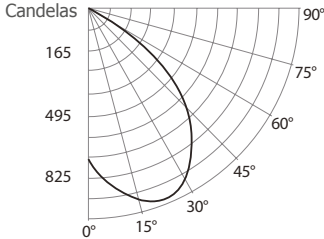
Round Wall Wash Trim

PHOTOMETRIC DATA



3,000K, 90+ CRI, Flood, Performance 3

CANDLEPOWER DISTRIBUTION



LIGHT CONE

Distance	FC	DIA
06'	19.7	7.6'
08'	11.1	10.1'
10'	7.1	12.7'
12'	4.9	15.2'
14'	3.6	17.7'
16'	2.8	20.3'

Beam: 64.7°
Beam Edge defined as 50% of Maximum Nadir Candle-power.

LUMINAIRE

Performance 3 LED	3,000K Flood	
CBCP / Lumens	710	/ 1,191.1
Watts	120V	277V
	24W	24.5W
Operating AMPS	0.20A	0.088A
Lumen Maintenance	L70 @ 50,000 Hrs	
CRI	90+	
Lumens/Watt	49.6	
Spacing Criteria	1.66	

COEFFICIENT OF UTILIZATION - %

Ceiling Reflect %	80		50		30		
Wall Reflect %	50	30	50	30	50	30	
RCR	0	119	119	111	111	106	106
	2	98	93	93	89	90	86
	4	80	73	77	71	75	70
	6	67	59	64	58	63	57
	8	57	49	55	48	54	48
	10	49	42	47	41	47	41

Zonal Cavity Method
Effective Floor Cavity Reflectance 20%

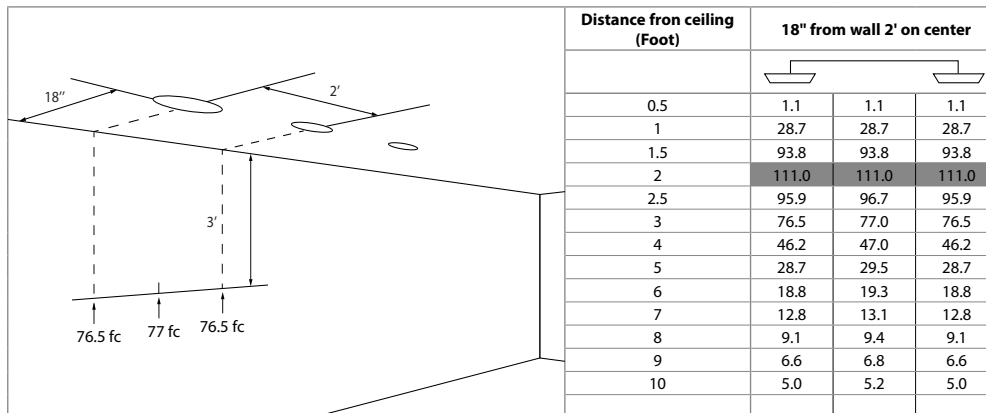
ZONAL LUMEN SUMMARY

ZONE	LUMENS	%LUMINAIRE
0-30	507.0	42.6%
0-40	781.6	65.6%
0-60	1,133.5	95.2%
60-90	57.6	4.8%
0-90	1,191.1	100%

CANDELAS DISTRIBUTION

DEGREES/ VERTICAL	CANDELAS
0	710
5	925
10	912
15	632
20	173
25	10
30	0

Footcandles On Wall - Performance 3



Note: Footcandles Data