

SPECIFICATION SHEET

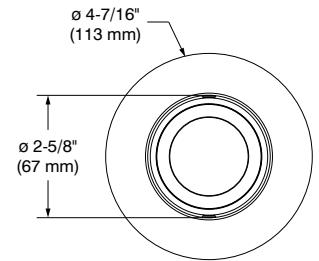
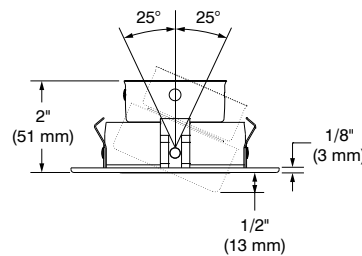
T3450D**3-1/2" Series – Classic/Evolution****Low Profile Regressed Trim
with Adjustable Reflector**

Project _____

Notes _____

Fixture Type _____

Date _____

T3450D-25SM (illustrated)
(Lamp not included)

SPECIFICATIONS

TRIM	Die-formed steel.
<i>Options in red may generate a longer production lead time</i>	Different finishes available: Powder coat painted (Standard) White (-01), Black (-02), Architectural Bronze (-05), Antique Cooper (-06), Matte White (-11), Matte Black (-22) and Polar Grey (-25) Plated (Premium) 24K Gold Plated (-03), Chrome (-04), Brushed Chrome (-04BR), Brushed Nickel (-12BR) and Satin Nickel (-13)
LAMPS (not included)	GU10 LED 10W MAX MR16 GU5.3 37W MAX (Remodel and Insulated housing) (protected lamps only) MR16 LED GU5.3 10W MAX 50W MAX (New Construction housing) (protected lamps only) If you want to use the dimming option and you use a LED lamp, please refer regularly to the lamp manufacturer compatibility list. For MR16 LED lamp usage, please refer to the selected housing specification sheet for details on transformer models (see compatible housing list below).
CEILING CUTOUT	ø 3-5/8" (92 mm)
CERTIFICATION	cULus for damp locations (for LED and halogens lamps)
WARRANTY	1 year limited warranty on components against manufacturing defects

CONTRASTE

2021-01

PRINTED IN CANADA

1009, rue du Parc Industriel
Lévis (Québec) G6Z 1C5 Canada
Tel.: 1-888-839-4624
Fax.: 1-877-839-7057
contrastlighting.com
info@contrastlighting.com

© 2021 Contrast Lighting M.L. Inc.
All rights reserved

Contrast Lighting M.L. Inc. reserves the right to make changes in specifications and/or to discontinue any product at any time without notice or obligation and will not be liable for any consequences resulting from the use of this publication.

SPECIFICATION SHEET

T3450D

3-1/2" Series – Classic/Evolution

**Low Profile Regressed Trim
with Adjustable Reflector**

SPECIFICATIONS (CONT'D)

REFLECTORS

STANDARD: Anodized Aluminum**OPTIONS:****Specular**

Black (-BK)

Clear (-CL)

Paint

White (-01)

Black (-02)

Matte White (-11)

ACCESSORIES

Goof Rings (see ordering code)**Opening Adaptor** (see ordering code)**Choice of optional lenses to customize your lighting:** (see ordering codes)**Clear (C):****Frosted (F)****Honeycomb (H):** the honeycomb louver reduces glare**Linear (L):** the linear lens directs the lamps beam to create a strip of light**Prismatic (P):** the prismatic lens diffuses and spreads the light in an even overall pattern**Solite (S):** the solite lens softens the light in an even overall pattern**Although not dangerous, the use of a 49 mm lens in conjunction with an LED lamp can result in overheating of the latter, reducing its lifespan.****Contrast cannot be held responsible for the overheating of LED lamps used with accessory lenses.**

COMPATIBLE HOUSINGS

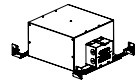
Remodel Housing



New Construction Housing



Insulated Housing



	Remodel Housing	New Construction Housing	Insulated Housing
LED 10W	IC / Air Tight RE35GU10-10W RE35MR16-120-10W RE35MR16-277-10W	IC / Air Tight NW35GU10-10W NW35MR16-120-10W NW35MR16-277-10W	IC / Air Tight IC35GU10-10W IC35MR16-120-10W IC35MR16-277-10W
HALOGENS 37W/50W	Non-IC / Non Air Tight RE35MR16-120-37W RE35MR16-277-37W	Non-IC / Non Air Tight NW35MR16-120-50W NW35MR16-277-50W NW35MR16-120D-50W NW35MR16-277D-50W	IC / Non Air Tight IC35MR16-120-37W IC35MR16-277-37W IC35MR16-120D-37W IC35MR16-277D-37W

CONTRASTE

SPECIFICATION SHEET

T3450D**3-1/2" Series – Classic/Evolution****Low Profile Regressed Trim
with Adjustable Reflector**

CODIFICATION EXAMPLE

T 3 4 5 0 D - 0 3 - C L S M

MODEL

REFLECTOR

TRIM FINISH

ORDERING CODES

Options in red may generate a longer production lead time.

MODEL	TRIM FINISHES	REFLECTORS
T3450D		SM
T3450D	POWDER COAT PAINTED (Standard)	ANODIZED
-01	White	Standard : Anodized Aluminum
-02	Black	
-11	Matte White	SPECULAR
-22	Matte Black	-CL Clear
-25	Polar Grey	-BK Black
-05	Architectural Bronze	
-06	Antique Copper	PAINT
	PLATED (Premium)	-01 White
-04BR	Brushed Chrome	-02 Black
-12BR	Brushed Nickel	-11 Matte White
-03	24K Gold Plated	
-04	Chrome	
-13	Satin Nickel	
		SM Smooth Reflector

OPENING ADAPTOR

Can lip adaptor for 3-1/2" (89 mm) pot in a 4-1/4" (108 mm) opening.

Finish: Galvanized Steel

**Code: 312296**Outside diameter: \varnothing 4-5/16" (110 mm)Inside diameter: \varnothing 3-5/8" (92 mm)**CONTRASTE**

T3450D

3-1/2" Series – Classic/Evolution

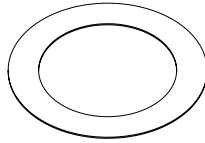
**Low Profile Regressed Trim
with Adjustable Reflector**



GOOF RINGS

Goof rings correct the openings too large or damaged ceiling cutout.

All goof rings are available in all Contraste finishes.
Add finish color code at the end of the goof rings code.
Ex.: RON3000-06



Code: RON3000

Outside diameter: ø 6-1/8" (156 mm)
Inside diameter: ø 3-5/8" (92 mm)

LENSES (49 MM)

For a modification of the light distribution.

- Clear (C): **103104**
- Frosted (F): **304826**
- Honeycomb (H): **103089**
- Linear (L): **103092**
- Prismatic (P): **103095**
- Solite (S): **103098**

