

# S2100

4" Series

## Low Profile Square Adjustable Shower Trim

Project \_\_\_\_\_

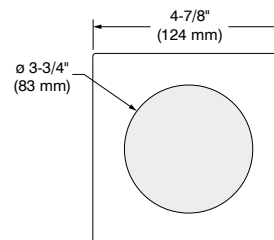
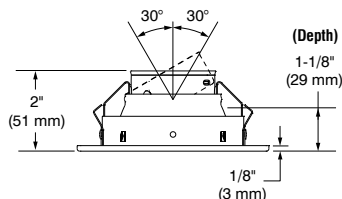
Notes \_\_\_\_\_

Fixture Type \_\_\_\_\_

Date \_\_\_\_\_



S2100-05 (illustrated)  
(Lamp not included)



### SPECIFICATIONS

TRIM	Die-formed steel.
<i>Options in red may generate a longer production lead time</i>	<p><b>Different finishes available:</b></p> <p><b>Powder coat painted (Standard)</b> White (-01), Black (-02), Architectural Bronze (-05), Antique Cooper (-06), Matte White (-11), Matte Black (-22) and Polar Grey (-25)</p> <p><b>Plated (Premium)</b> 24K Gold Plated (-03), Chrome (-04), Brushed Chrome (-04BR), Brushed Nickel (-12BR) and Satin Nickel (-13)</p>
LAMPES (non include)	<p><b>GU10 LED 10W MAX</b>                      <b>MR16 GU5.3 20W MAX</b> (Remodel and Insulated housing) - (protected lamps only)</p> <p><b>MR16 LED GU5.3 7W MAX</b>                      50W MAX (New Construction housing) - (protected lamps only)</p> <p>If you want to use the dimming option and you use a LED lamp, please refer regularly to the lamp manufacturer compatibility list.</p> <p>For MR16 LED lamp usage, please refer to the selected housing specification sheet for details on transformer models (see compatible housing list below).</p> <p><b>Using LED lamps in shower trims and an Air Tight housing may result in its lifespan decrease.</b> <b>Contraste cannot be held responsible for LED lamps lifespan loss when used in totally enclosed spaces.</b></p>
CEILING CUTOUT	<b>ø 4-1/4" (108 mm)</b>
LENSES	<p><b>STANDARD: Frosted Lens</b></p> <p><b>Available:</b> Clear lens (C), Frosted with clear center lens (FC).</p> <p>To order, place the lens code after the trim code. <b>Ex. :</b> S2100FC-01</p>
ACCESSORIES	<b>Goof Rings</b> (see ordering code)
CERTIFICATION	cULus for <b>wet locations</b> (for LED and halogens lamps)
WARRANTY	1 year limited warranty on components against manufacturing defects

SPECIFICATION SHEET

# S2100



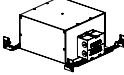
4" Series

## Low Profile Square Adjustable Shower Trim

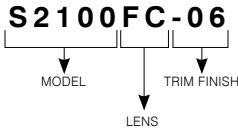


SPECIFICATIONS (CONT'D)

COMPATIBLE HOUSINGS

	Remodel Housing 	New Construction Housing 	Insulated Housing 
<b>LED</b> 10W	<b>IC / Air Tight</b> RE40GU10-10W RE40MR16-120-10W RE40MR16-277-10W	<b>IC / Air Tight</b> NW40GU10-10W NW40MR16-120-10W NW40MR16-277-10W	<b>IC / Air Tight</b> IC40GU10-10W IC40MR16-120-10W IC40MR16-277-10W
<b>HALOGENS</b> 37W/50W	<b>Non-IC / Non Air Tight</b> RE40MR16-120-37W RE40MR16-277-37W	<b>Non-IC / Non Air Tight</b> NW40MR16-120-50W NW40MR16-277-50W NW40MR16-120D-50W NW40MR16-277D-50W	<b>IC / Non Air Tight</b> IC40MR16-120-37W IC40MR16-277-37W IC40MR16-120D-37W IC40MR16-277D-37W

CODIFICATION EXAMPLE



ORDERING CODES

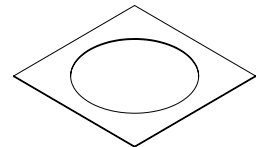
*Options in red may generate a longer production lead time.*

MODÈLE	LENSES	TRIM FINISHES
<b>S2100</b>		
<b>S2100</b>	<b>Standard:</b> Frosted	<b>POWDER COAT PAINTED (Standard)</b>
<b>C</b>	Clear	<b>-01</b> White
<b>FC</b>	Frosted with clear center	<b>-02</b> Black
		<b>-11</b> Matte White
		<b>-22</b> Matte Black
		<b>-25</b> Polar Grey
		<b>-05</b> Architectural Bronze
		<b>-06</b> Antique Copper
		<b>PLATED (Premium)</b>
		<b>-04BR</b> Brushed Chrome
		<b>-12BR</b> Brushed Nickel
		<b>-03</b> 24K Gold Plated
		<b>-04</b> Chrome
		<b>-13</b> Satin Nickel

GOOF RINGS

Goof rings correct the openings too large or damaged ceiling cutout.

All goof rings are available in all Contraste finishes. Add finish color code at the end of the goof rings code. Ex.: RON2100-06



**Code: RON2100**

Outside dimensions: 5-1/2" (140 mm) x 5-1/2" (140 mm)  
Inside diameter: ø 4-1/8" (105 mm)