

RE40GU10-10W

4" - Classic/Evolution

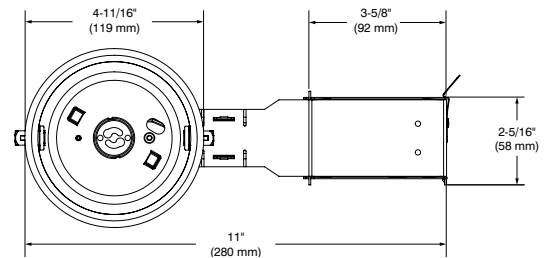
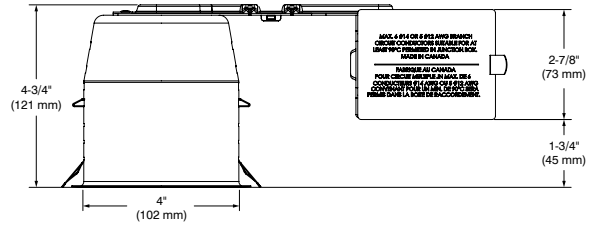
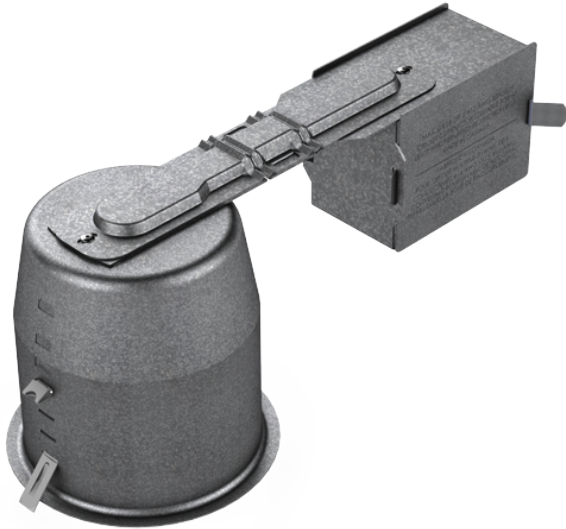
IC and Air Tight Remodel Housing for GU10 Lamp (LED)

Project _____

Notes _____

Fixture Type _____

Date _____



SPECIFICATIONS

HOUSING DETAILS	<p>18 gauge up to 0.051" (1.3 mm) thick galvanized steel housing.</p> <p>Flexible channel wire bracket made of 20 gauge steel, bending up to 45° vertically for ease of installation in confined spaces.</p> <p>19-1/2 in³ junction box can support up to 10 - 14 gauge wires or 8 - 12 gauge wires.</p> <p>Below-ceiling accessible.</p>
MOUNTING AND SUPPORT	<p>Cutout diameter: ø 4-1/4" (108 mm)</p> <p>Can fit ceilings up to 2" (51 mm) thick.</p> <p>Requires a 4-3/4" (121 mm) clearance beyond the ceiling level.</p> <p>Tool-free snap-in hooks for ease of installation and a perfect fit to ceiling.</p> <p>No light leakage.</p>
LAMPS	GU10 LED 10W MAX
VOLTAGE	120 Volts
DIMMING	If you want to use the dimming option, please refer regularly to the lamp manufacturer compatibility list.
COMPATIBLE TRIMS	R2000 R2100 S2000 S2100 T2000
CERTIFICATION	<ul style="list-style-type: none"> cULus for damp locations; wet locations for shower trims only Certified Air Tight ASTM E283
WARRANTY	1-year limited warranty on components

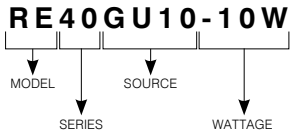
RE40GU10-10W

4" - Classic/Evolution

IC and Air Tight Remodel Housing for GU10 Lamp (LED)



CODIFICATION EXAMPLE



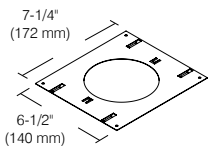
ORDERING CODES

MODEL	SERIES	SOURCE	WATTAGE
RE	40	GU10	-10W
RE Remodel Housing	40 4" Series	GU10 GU10 LED	-10W 10W

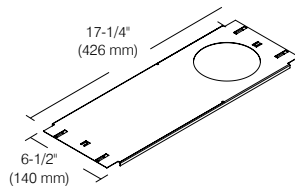
MOUNTING PLATES

Ceiling cutout: \varnothing 4-1/4" (108 mm)

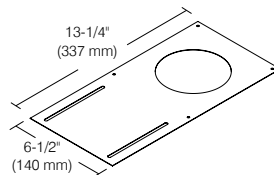
Code: P2000
(Mounting Bars required)



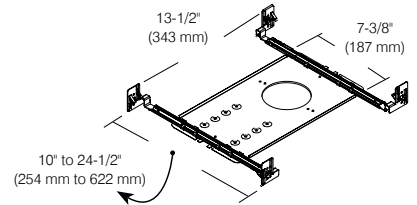
Code: P2000L
(Mounting Bars required)



Code: P2000N
(Mounting Bars NOT required)



Code: P2000NW
(Mounting Bars INCLUDED)



MOUNTING BARS

Short Bars Adjustable (2 units)
From 13-1/2" (343 mm) to 21-3/4" (553 mm)

Code: BARS

Long Bars Adjustable (2 units)
From 19-1/2" (495 mm) to 34" (863 mm)

Code: BARL

Interlocking Adjustable Bars (2 pairs)
From 10" (254 mm) to 24-1/2" (622 mm)

Code: BARK-REV1

CONTRASTE

RE40GU10-10W

4" - Classic/Evolution

IC and Air Tight Remodel Housing for GU10 Lamp (LED)



GOOF RINGS

Goof rings correct the openings too large or damaged ceiling cutout.

All goof rings are available in all Contraste finishes.
Add finish color code at the end of the goof rings code.
Ex.: RON2000-06

For round trims
Code: RON2000



Outside diameter: \varnothing 6-1/8" (156 mm)
Inside diameter: \varnothing 4-1/8" (105 mm)

For square trims
Code: RON2100



Outside dimensions: 5-1/2" (140 mm) x 5-1/2" (140 mm)
Inside diameter: \varnothing 4-1/8" (92 mm)