

SPECIFICATION SHEET

RE35GU10-10WQC

3-1/2" - Coastal Line

IC and Air Tight Remodel Housing
for GU10 Lamp (LED)

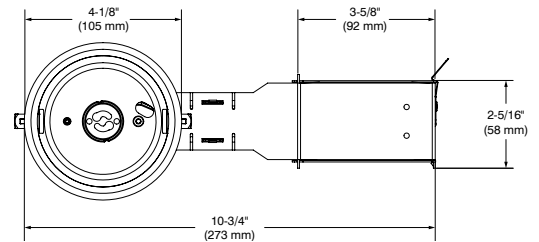
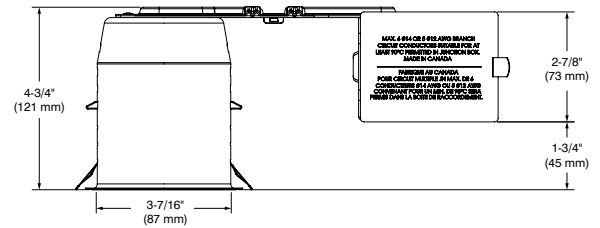


Project _____

Notes _____

Fixture Type _____

Date _____



SPECIFICATIONS

HOUSING
DETAILS

Galvanized steel housing with E-coat painted pot + black powder coating 18 gauge up to 0.051" (1.3 mm) thickness.
Flexible channel wire bracket made of 20 gauge steel, bending up to 45° vertically for ease of installation in confined spaces.
19-1/2 in³ junction box can support up to 10 - 14 gauge wires or 8 - 12 gauge wires.
Below-ceiling accessible.

MOUNTING AND
SUPPORT

Cutout diameter: ø 3-5/8" (92 mm)
Can fit ceilings up to 2" (51 mm) thick.
Requires a 4-3/4" (121 mm) clearance beyond the ceiling level.
Tool-free snap-in hooks for ease of installation and a perfect fit to ceiling.
No light leakage.

LAMPS

GU10 LED 10W MAX

VOLTAGE

120 Volts

DIMMING

If you want to use the dimming option, please refer regularly to the lamp manufacturer compatibility list.

COMPATIBLE
TRIMS

R3450D
T3250
T3450

CERTIFICATION

- cULus for damp locations; wet locations for shower trims only
- Certified Air Tight ASTM E283

WARRANTY

3-year limited warranty

CONTRASTE

1009, rue du Parc Industriel
Lévis (Québec) G6Z 1C5 Canada
Tel.: 1-888-839-4624
Fax.: 1-877-839-7057
contrastlighting.com
info@contrastlighting.com

© 2020 Contrast Lighting M.L. Inc.
All rights reserved

Contrast Lighting M.L. Inc. reserves the right to make changes in specifications and/or to discontinue any product at any time without notice or obligation and will not be liable for any consequences resulting from the use of this publication.

SPECIFICATION SHEET

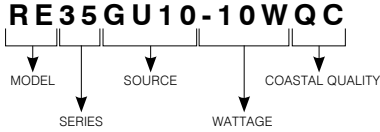
RE35GU10-10WQC

3-1/2" - Coastal Line

IC and Air Tight Remodel Housing
for GU10 Lamp (LED)



CODIFICATION EXAMPLE



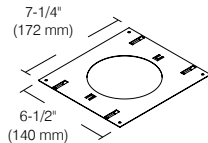
ORDERING CODES

MODEL	SERIES	SOURCE	WATTAGE	COASTAL QUALITY
RE	35	GU10	-10W	QC
RE Remodel Housing	35 3-1/2" Series	GU10 GU10 LED	-10W 10W	QC Coastal Quality

MOUNTING PLATES

Ceiling cutout: **ø 3-5/8" (92 mm)**

Code: **P2550/3600QC**



GOOF RINGS

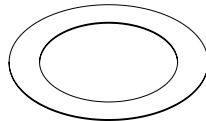
Stainless Steel goof rings correct the openings too large or damaged ceiling cutout.

Available in the following finishes : -01, -02, -11 and -22.
Add finish color code and **QC** at the end of the goof rings code.
Ex.: RON3000-11**QC**



For round trims
Code: **RON3000**

Outside diameter: ø 6-1/8" (156 mm)
Inside diameter: ø 3-5/8" (92 mm)



CONTRASTE