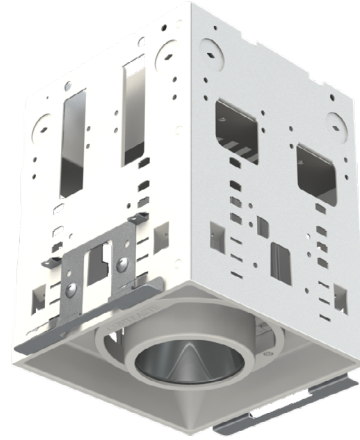


**Modul-Aim™****REM0D****Assembled Remodel Housings  
(Patent Pending)**

## DESCRIPTION

Assembled Modul-Aim units for remodeler installations.  
Offered in 1, 2, 3, "L" or 4 "square" head configurations.



REM0D1-11XX-XXX

Project

Notes

Fixture Type

Date

## SPECIFICATIONS

HOUSING  
DETAILS

Powder coated, 22 gauge 0.036" (0.91 mm) galvanized steel housing.  
Remodeler mounting brackets (Patent Pending) (included).  
Perfect fit into ceiling. No light leakage.  
Each part of the housing should be at LEAST 3" (76 mm) from insulation (non-IC configuration).  
Can fit in ceilings up to 2" (51 mm) thick.  
Junction box is accessible from below the ceiling for ease of maintenance.

## LIGHT ENGINE

**Standard:**

Lumileds Luxeon CoB 1205 GEN3, delivers a lumen maintenance greater than 70% after 50,000 hours of operation ( $L_{70}$ ). Provides a high quality true color and a clean white light without hot spots. Color binning within 3 steps on MacAdam ellipse which surpasses ANSI binning requirements.

Offered in 2,700K, 3,000K, 3,500K and 4,000K. 90+ CRI.

Several driver models available offering 3 dimming options:

ELV: 120V to 277V (20W and 40W)

0-10V: 120V to 277V (20W and 40W)

Lutron Ecosystem addressable: 120V to 277V (20W)

**CrispWhite:**

Lumileds LUXEON CoB 1205 GEN2 with CrispWhite Technology delivers the warm saturated colors of high 90 + CRI solutions while creating the natural crisp whiteness required for merchandising. Offered in 3,000K only.

Several driver models available offering 3 dimming options:

ELV: 120V to 277V (20W and 40W)

0-10V: 120V to 277V (20W and 40W)

Lutron Ecosystem addressable: 120V to 277V (20W)

**Lumenetix Warm Dimming:**

Lumenetix Araya DDM1 Dynamic Dimming Module delivers dimmable white light that warms as it dims reproducing dimming conditions of a halogen lamp. It allows the user to change the color temperature from 3,050K at full intensity to 1,800K at minimum intensity all this while ensuring a 90+ CRI over the full dimming range.

Lumenetix: 100V to 240V (20W)

**Lumenetix Color Tuning:**

Lumenetix Araya CTM1 Color Tuning Module allows the user to program millions of color combinations using a user friendly Bluetooth application available on iOS mobile devices. The application allows programming of different scenes, colors, and color temperatures while the day-to-day control is ensured by standard 0-10V wall mounted dimmers. 90+ CRI.

Lumenetix: 100V to 240V (20W)

DELIVERED  
LUMENS

**Performance 1 (20W) Standard:** 1,426 lumens @ 3,000K, 71 lm/W

**Performance 2 (40W) Standard:** 2,361 lumens @ 3,000K, 59 lm/W

**Performance 1 (20W) "CrispWhite":** 1,195 lumens @ 3,000K, 56 lm/W

**Performance 2 (40W) "CrispWhite":** 2,075 lumens @ 3,000K, 52 lm/W

**Warm Dimming (20W):** 936 lumens @ 3,000K, 47 lm/W

**Color Tuning (20W):** 936 lumens @ 4,000K, 47 lm/W

**\* Average lumens output shown. Consult ies files on our Website for more details.**

**CONTRASTE**2019-01  
Revision 2

PRINTED IN CANADA

1009, rue du Parc Industriel  
Lévis (Québec) G6Z 1C5 Canada  
Tel.: 1-888-839-4624  
Fax.: 1-877-839-7057  
contrastelighting.com  
info@contrastelighting.com

© 2019 Contraste Lighting M.L. Inc.  
All rights reserved

Contrast Lighting M.L. Inc. reserves the right to make changes in specifications and/or to discontinue any product at any time without notice or obligation and will not be liable for any consequences resulting from the use of this publication.

# Modul-Aim™

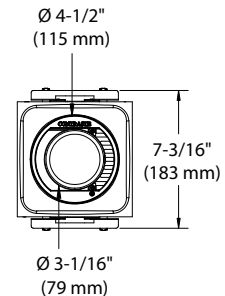
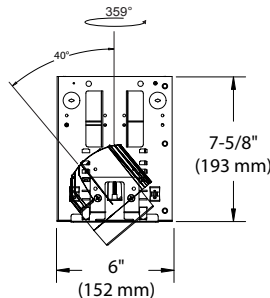
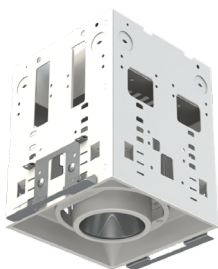
## REM0D

### SPECIFICATIONS (CONT'D)

UNIT FINISH	Powder coated: Matte White (-11) or Matte Black (-22)
OPTIC SYSTEM	Interchangeable optional optical reflectors and lenses available to customize your lighting.  <b>Choice of available lenses (also sold separately):</b> <b>Standard:</b> Clear <b>Clear (C)</b> <b>Frosted (F)</b> <b>Honeycomb (H):</b> the hexagonal louver reduces glare <b>Linear (L):</b> the linear lens directs the lamp beam to create a strip of light <b>Prismatic (P):</b> the prismatic lens diffuses and spreads the light in an even overall pattern  <b>Optical reflectors available:</b> <b>(Standard and CrispWhite)</b> <b>S:</b> Spot → 15° <b>MS:</b> Medium Spot → 19° <b>M:</b> Narrow Flood → 32° <b>W:</b> Flood → 45°  <b>Optical reflectors available:</b> <b>(Lumenetix)</b> <b>M:</b> Narrow Flood → 26° <b>W:</b> Flood → 41°  <i>* Average beams shown. Consult ies files on our Website for more details.</i>
ADJUSTABILITY	Swivel: 360° 40° aiming Locking device: choose aiming angle then tighten a screw to lock both axis into position.
HEAT SINK	High quality aluminum injected heat sink ensuring maximum heat dissipation.
CEILING CUTOUT	<b>For a simple unit:</b> <b>6-1/4" x 6-1/4" (159 mm x 159 mm)</b>  Refer to installation guide for other configurations.
CERTIFICATION	<ul style="list-style-type: none"> <li>cULus for <b>damp locations</b></li> <li>Energy Star® certified</li> </ul>
WARRANTY	1 year on components against manufacturing defects. 5 years on LED modules and drivers.

### ASSEMBLED MODELS

#### REM0D1

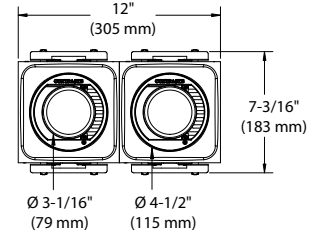
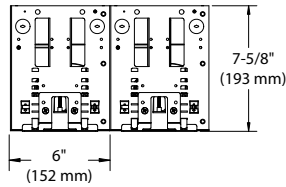
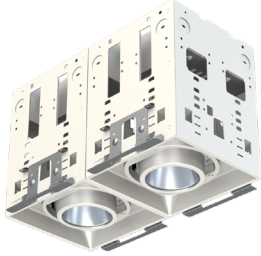


# Modul-Aim™

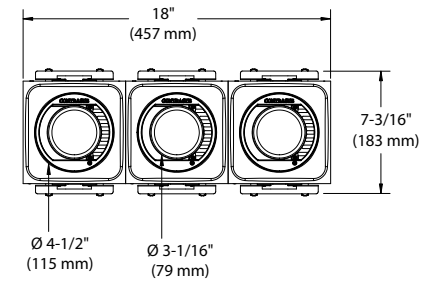
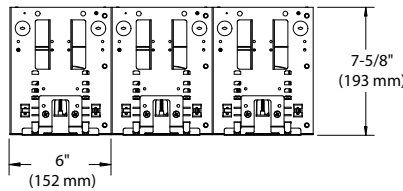
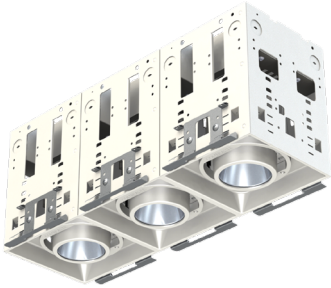
## REM0D

### ASSEMBLED MODELS (CONT'D)

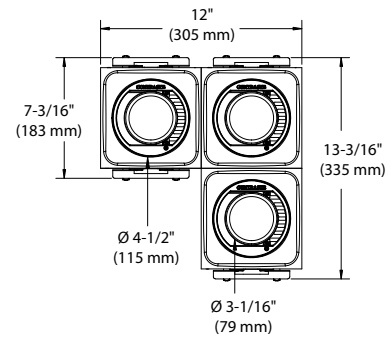
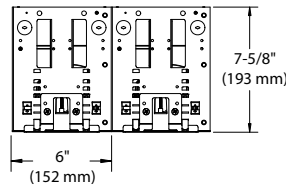
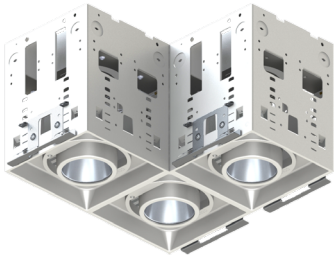
#### REM0D2



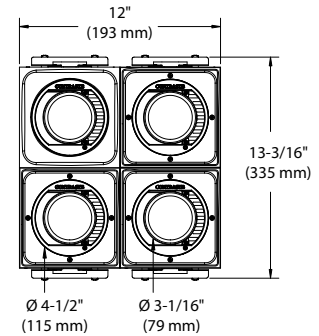
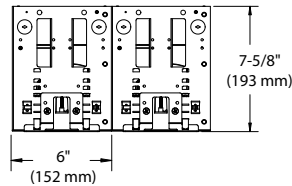
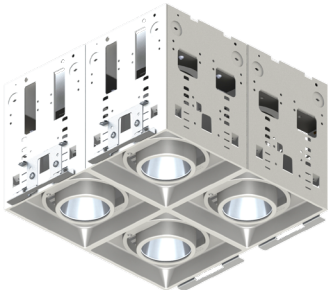
#### REM0D3



#### REM0DL



#### REM0DS



# CONTRASTE

2019-01  
Revision 2

PRINTED IN CANADA

1009, rue du Parc Industriel  
Lévis (Québec) G6Z 1C5 Canada  
Tel.: 1-888-839-4624  
Fax.: 1-877-839-7057  
contrastelighting.com  
info@contrastelighting.com

© 2019 Contraste Lighting M.L. Inc.  
All rights reserved

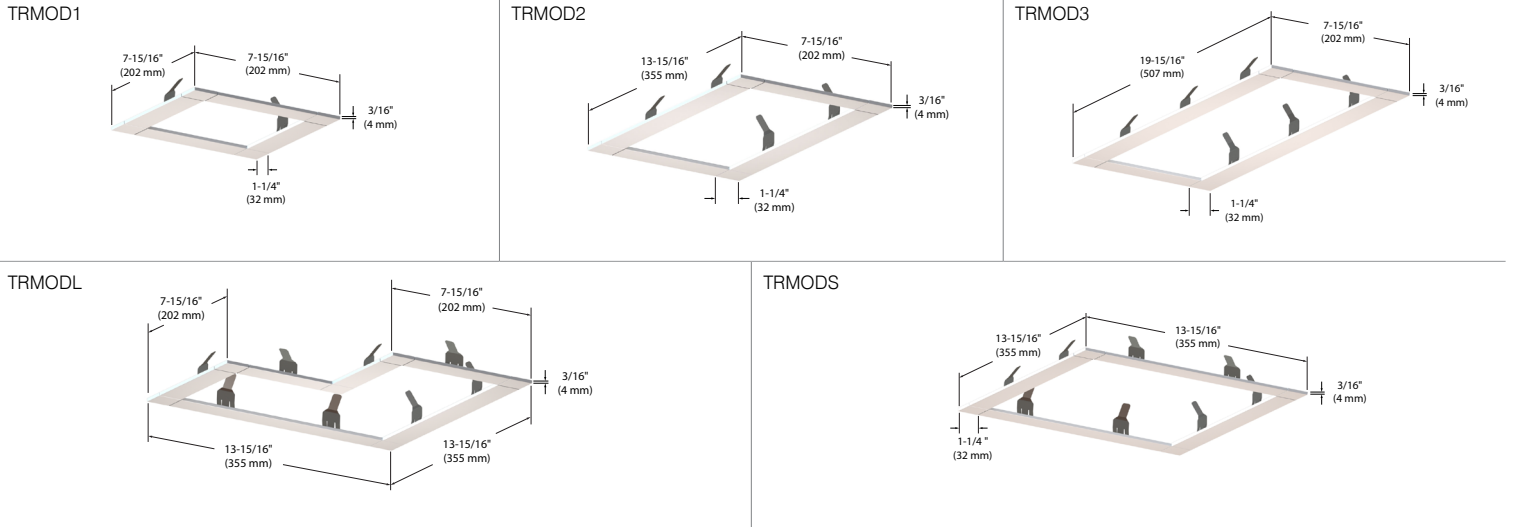
Contrast Lighting M.L. Inc. reserves the right to make changes in specifications and/or to discontinue any product at any time without notice or obligation and will not be liable for any consequences resulting from the use of this publication.

# Modul-Aim™

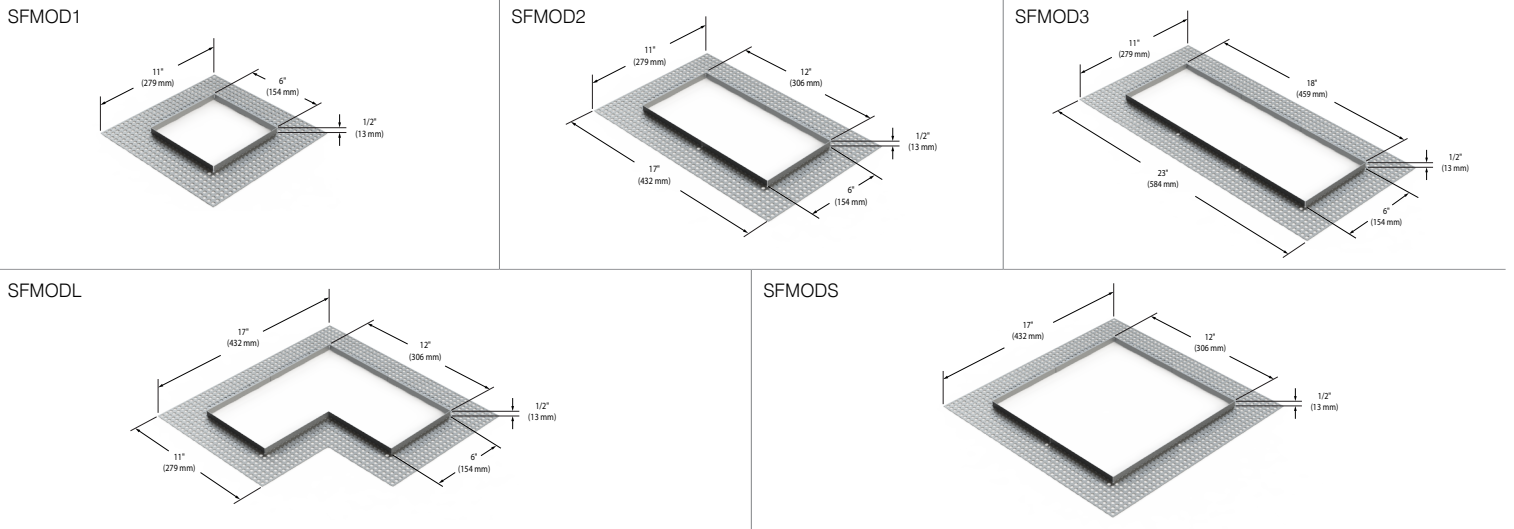
## REM0D

### TRIMS

Available finishes: Matte White (-11), Metallic Grey (-15) and Matte Black (-22)



### MESH PLATE (Trimless)



### MASK

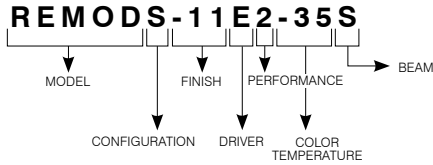
Available finishes: Matte White (-11) and Matte Black (-22)



# Modul-Aim™

## REM0D

### REM0DEL UNIT WITH STANDARD LIGHT ENGINE CODIFICATION EXAMPLE

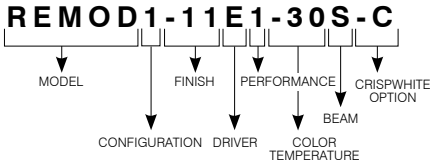


### ORDERING CODES for Remodel Unit with Standard Light Engine

MODEL	CONFIGURATIONS	FINISHES	DRIVER	PERFORMANCE	COLOR TEMPERATURES	BEAMS
<b>REM0D</b>						
Remodel	1 1 unit 2 2 units 3 3 units L 3 units "L" shape S 4 units square shape	-11 Matte White -22 Matte Black	E ELV D 0-10V A Lutron Ecosystem Addressable <small>(Available with Performance 1 only)</small>	1 20W (1,426 Lumens delivered) 2 40W (2,361 Lumens delivered)	-27 2,700K -30 3,000K -35 3,500K -40 4,000K	S Spot (15°) MS Medium Spot (19°) M Narrow Flood (32°) W Flood (45°)

Trim, mask and trimless mesh plate to be ordered separately based on your configuration.

### REM0DEL UNIT WITH CRISPWHITE TECHNOLOGY CODIFICATION EXAMPLE



### ORDERING CODES for Remodel Unit with CrispWhite Technology

MODEL	CONFIGURATIONS	FINISHES	DRIVER	PERFORMANCE	COLOR TEMPERATURE	BEAM	CRISPWHITE OPTION
<b>REM0D</b>					<b>-30</b>		<b>-C</b>
Remodel	1 1 unit 2 2 units 3 3 units L 3 units "L" shape S 4 units square shape	-11 Matte White -22 Matte Black	E ELV D 0-10V A Lutron Ecosystem Addressable <small>(Available with Performance 1 only)</small>	1 20W (1,195 Lumens delivered) 2 40W (2,075 Lumens delivered)	-30 3,000K	S Spot (15°) MS Medium Spot (19°) M Narrow Flood (32°) W Flood (45°)	-C CrispWhite Technology

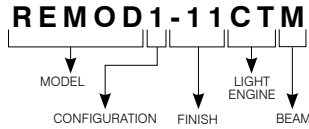
Trim, mask and trimless mesh plate to be ordered separately based on your configuration.



# Modul-Aim™

## REM0D

### REM0DEL UNIT WITH LUMENETIX ENGINE CODIFICATION EXAMPLE

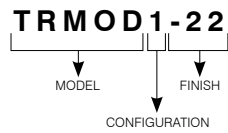


### ORDERING CODES for Remodel Unit with Lumenetix Engine

MODEL	CONFIGURATIONS	FINISHES	LIGHT ENGINE	BEAMS
<b>REM0D</b>				
<b>REM0D</b> Remodel	<b>1</b> 1 unit <b>2</b> 2 units <b>3</b> 3 units <b>L</b> 3 units "L" shape <b>S</b> 4 units square shape	<b>-11</b> Matte White <b>-22</b> Matte Black	<b>CT</b> Color Tuning <b>WD</b> Warm Dimming	<b>M</b> Narrow Flood (26°) <b>W</b> Flood (41°)

Trim, mask and trimless mesh plate to be ordered separately based on your configuration.

### TRIM CODIFICATION EXAMPLE



### ORDERING CODES for Trim

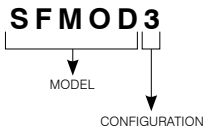
MODEL	CONFIGURATIONS	FINISHES
<b>TRM0D</b>		
<b>TRM0D</b>	<b>1</b> 1 unit <b>2</b> 2 units <b>3</b> 3 units <b>L</b> 3 units "L" shape <b>S</b> 4 units square shape	<b>-11</b> Matte White <b>-15</b> Metallic Grey <b>-22</b> Matte Black



# Modul-Aim™

## REM0D

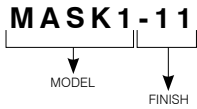
### MESH PLATE (TRIMLESS) CODIFICATION EXAMPLE



### ORDERING CODES for Mesh Plate (Trimless)

MODEL	CONFIGURATIONS
<b>SF MOD</b>	
<b>SF MOD</b>	<b>1</b> 1 unit
	<b>2</b> 2 units
	<b>3</b> 3 units
	<b>L</b> 3 units "L" shape
	<b>S</b> 4 units square shape

### MASK CODIFICATION EXAMPLE



### ORDERING CODES for Mask

MODEL	FINISHES
<b>MASK1</b>	
<b>MASK1</b>	<b>-11</b> Matte White
	<b>-22</b> Matte Black

### ORDERING CODES for replacement lenses and reflectors

For future on site modifications of the light distribution.

#### Lenses (to modify light diffusion)

- Clear: **103105**
- Frosted: **103189**
- Honeycombs: **103822**
- Linear: **103823**
- Prismatic: **103824**

#### Reflectors (to modify the beam angle)

**\* Only with standard engine and CrispWhite technology**

- For a Spot: **103737**
- For a Medium Spot: **103738**
- For a Narrow Flood: **103739**
- For a Flood: **316545**



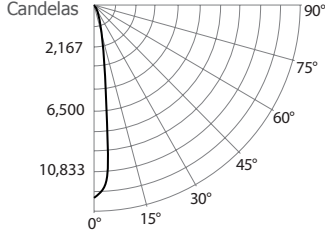
# Modul-Aim™

## REM0D

### PHOTOMETRIC DATA

#### 3,000K, 90 + of CRI, Spot, Performance 1

##### CANDLEPOWER DISTRIBUTION



##### LIGHT CONE

Distance	FC	DIA
06'	334.8	1.5'
08'	188.3	2.0'
10'	120.5	2.5'
12'	83.7	3.0'
14'	61.5	3.5'
16'	47.1	4.0'

Beam: 14.2"  
Beam Edge defined as 50% of Maximum Nadir Candlepower.

##### LUMINAIRE

Modul-Aim Performance 1 LED	3,000K Spot
CBCP / Lumens	12,052 / 1,425.5
Watts	120V 277V 20.42W 21.92W
Operating AMPS	0.17A 0.07A
Lumen Maintenance	L70 @ 50,000 Hrs
CRI	90+
Lumens/Watt	69.8
Spacing Criteria	0.25

##### COEFFICIENT OF UTILIZATION - %

RCC %	80			50			30		
RWC %	50	30	50	30	50	30	50	30	
RCR	0	119	119	111	111	106	106	106	
	2	108	105	103	101	100	98		
	4	99	95	96	93	94	92		
	6	92	88	90	87	89	86		
	8	87	82	85	82	84	81		
	10	82	78	81	77	80	77		

##### Zonal Cavity Method

Effective Floor Cavity Reflectance 20%

##### ZONAL LUMEN SUMMARY

ZONE	LUMENS	%LUMINAIRE
0-30	1,288.4	90.4%
0-40	1,414.5	99.2%
0-60	1,425.5	100%
60-90	0	0%
0-90	1,425.5	100%

##### MULTIPLE UNIT DATA - (RCR 2)

SPACING ON CENTER	INITIAL FOOTCANDLES	WATTS/SQ. FT.
5'	72	0.90
6'	40	0.51
7'	28	0.35
8'	28	0.35
9'	18	0.23

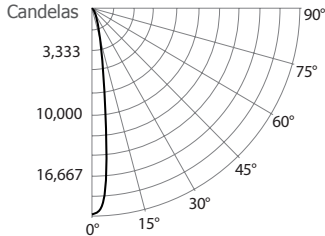
38' x 38' x 10' Room. Workplan located 2-1/2' (30").  
Reflection factor of 80%/50%/30%.

##### CANDELAS DISTRIBUTION

DEGREES/VERTICAL	CANDELAS	DEGREES/VERTICAL	CANDELAS
0	12,052	40	20
5	9,111	50	3
10	3,082	60	0
15	1,168	70	0
20	704	80	0
25	613	90	0
30	526		

#### 3,000K, 90 + of CRI, Spot, Performance 2

##### CANDLEPOWER DISTRIBUTION



##### LIGHT CONE

Distance	FC	DIA
06'	554.3	1.5'
08'	311.8	2.0'
10'	199.5	2.5'
12'	138.6	3.0'
14'	101.8	3.5'
16'	77.9	4.0'

Beam: 14.2"  
Beam Edge defined as 50% of Maximum Nadir Candlepower.

##### LUMINAIRE

Modul-Aim Performance 2 LED	3,000K Spot
CBCP / Lumens	19,954 / 2,360.1
Watts	120V 277V 38.7W 39.2W
Operating AMPS	0.32A 0.14A
Lumen Maintenance	L70 @ 50,000 Hrs
CRI	90+
Lumens/Watt	60.9
Spacing Criteria	0.25

##### COEFFICIENT OF UTILIZATION - %

RCC %	80			50			30		
RWC %	50	30	50	30	50	30	50	30	
RCR	0	119	119	111	111	106	106	106	
	2	108	105	103	101	100	98		
	4	99	95	96	93	94	92		
	6	92	88	90	87	89	86		
	8	87	82	85	82	84	81		
	10	82	78	81	77	80	77		

##### Zonal Cavity Method

Effective Floor Cavity Reflectance 20%

##### ZONAL LUMEN SUMMARY

ZONE	LUMENS	%LUMINAIRE
0-30	2,133.1	90.4%
0-40	2,341.9	99.2%
0-60	2,360.1	100%
60-90	0	0%
0-90	2,360.1	100%

##### MULTIPLE UNIT DATA - (RCR 2)

SPACING ON CENTER	INITIAL FOOTCANDLES	WATTS/SQ. FT.
5'	119	1.72
6'	67	0.96
7'	46	0.67
8'	46	0.67
9'	30	0.43

38' x 38' x 10' Room. Workplan located 2-1/2' (30").  
Reflection factor of 80%/50%/30%.

##### CANDELAS DISTRIBUTION

DEGREES/VERTICAL	CANDELAS	DEGREES/VERTICAL	CANDELAS
0	19,954	40	33
5	15,084	50	5
10	5,103	60	0
15	1,934	70	0
20	1,165	80	0
25	1,016	90	0
30	871		





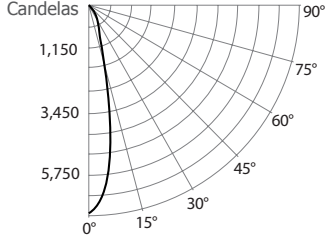
# Modul-Aim™

## REM0D

### PHOTOMETRIC DATA (CONT'D)

#### 3,000K, 90 + of CRI, Medium Spot, Performance 1

##### CANDLEPOWER DISTRIBUTION



##### LIGHT CONE

Distance	FC	DIA
06'	189.0	2.1'
08'	106.3	2.8'
10'	68.0	3.6'
12'	47.3	4.3'
14'	34.7	5.0'
16'	26.6	5.7'

Beam: 20.2°  
Beam Edge defined as 50% of Maximum Nadir Candlepower.

##### LUMINAIRE

Modul-Aim Performance 1 LED	3,000K Medium Spot
CBCP / Lumens	6,804 / 1,371.5
Watts	120V 277V 20.42W 20.92W
Operating AMPS	0.17A 0.07A
Lumen Maintenance	L70 @ 50,000 Hrs
CRI	90+
Lumens/Watt	67.2
Spacing Criteria	0.35

##### COEFFICIENT OF UTILIZATION - %

RCC %	80			50			30		
RWC %	50	30	50	30	50	30	50	30	
RCR	0	119	119	111	111	106	106	106	
	2	107	104	102	100	99	97		
	4	98	93	94	91	93	90		
	6	90	86	88	84	87	83		
	8	84	79	82	79	81	78		
	10	78	74	77	74	77	73		

Zonal Cavity Method  
Effective Floor Cavity Reflectance 20%

##### ZONAL LUMEN SUMMARY

ZONE	LUMENS	%LUMINAIRE
0-30	1,226.6	89.4%
0-40	1,357.5	99%
0-60	1,371.5	100%
60-90	0	0%
0-90	1,371.5	100%

##### MULTIPLE UNIT DATA - (RCR 2)

SPACING ON CENTER	INITIAL FOOTCANDLES	WATTS/SQ. FT.
5'	68	0.90
6'	38	0.51
7'	27	0.35
8'	27	0.35
9'	17	0.23

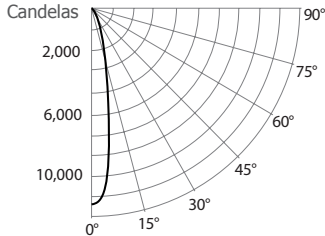
38' x 38' x 10' Room. Workplan located 2-1/2' (30").  
Reflection factor of 80%/50%/30%.

##### CANDELAS DISTRIBUTION

DEGREES/VERTICAL	CANDELAS	DEGREES/VERTICAL	CANDELAS
0	6,804	40	31
5	5,901	50	4
10	3,448	60	0
15	1,477	70	0
20	851	80	0
25	626	90	0
30	520		

#### 3,000K, 90 + of CRI, Medium Spot, Performance 2

##### CANDLEPOWER DISTRIBUTION



##### LIGHT CONE

Distance	FC	DIA
06'	313.0	2.1'
08'	176.1	2.8'
10'	112.7	3.6'
12'	78.3	4.3'
14'	57.5	5.0'
16'	44.0	5.7'

Beam: 20.2°  
Beam Edge defined as 50% of Maximum Nadir Candlepower.

##### LUMINAIRE

Modul-Aim Performance 2 LED	3,000K Medium Spot
CBCP / Lumens	11,268 / 2,271.3
Watts	120V 277V 38.8W 39.3W
Operating AMPS	0.32A 0.14A
Lumen Maintenance	L70 @ 50,000 Hrs
CRI	90+
Lumens/Watt	58.5
Spacing Criteria	0.35

##### COEFFICIENT OF UTILIZATION - %

RCC %	80			50			30		
RWC %	50	30	50	30	50	30	50	30	
RCR	0	119	119	111	111	106	106	106	
	2	107	104	102	100	99	97		
	4	98	93	94	91	93	90		
	6	90	86	88	84	87	83		
	8	84	79	82	79	81	78		
	10	78	74	77	74	77	73		

Zonal Cavity Method  
Effective Floor Cavity Reflectance 20%

##### ZONAL LUMEN SUMMARY

ZONE	LUMENS	%LUMINAIRE
0-30	2,031.4	89.4%
0-40	2,248.2	99%
0-60	2,271.3	100%
60-90	0	0%
0-90	2,271.3	100%

##### MULTIPLE UNIT DATA - (RCR 2)

SPACING ON CENTER	INITIAL FOOTCANDLES	WATTS/SQ. FT.
5'	113	1.72
6'	64	0.97
7'	44	0.67
8'	44	0.67
9'	28	0.43

38' x 38' x 10' Room. Workplan located 2-1/2' (30").  
Reflection factor of 80%/50%/30%.

##### CANDELAS DISTRIBUTION

DEGREES/VERTICAL	CANDELAS	DEGREES/VERTICAL	CANDELAS
0	11,268	40	52
5	9,772	50	6
10	5,710	60	0
15	2,447	70	0
20	1,410	80	0
25	1,037	90	0
30	861		



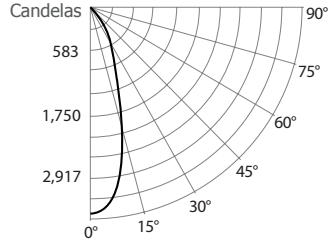
# Modul-Aim™

## REM0D

### PHOTOMETRIC DATA (CONT'D)

#### 3,000K, 90 + of CRI, Narrow Flood, Performance 1

##### CANDLEPOWER DISTRIBUTION



##### LIGHT CONE

Distance	FC	DIA
06'	94.5	3.6'
08'	53.2	4.8'
10'	34.0	6.0'
12'	23.6	7.2'
14'	17.4	8.4'
16'	13.3	9.6'

Beam: 33.5°  
Beam Edge defined as 50% of Maximum Nadir Candelpower.

##### LUMINAIRE

<b>Modul-Aim Performance 1 LED</b>	3,000K	Narrow Flood
<b>CBCP / Lumens</b>	3,404	/ 1,365.5
<b>Watts</b>	<b>120V</b>	<b>277V</b>
	20.42W	20.92W
<b>Operating AMPS</b>	0.17A	0.07A
<b>Lumen Maintenance</b>	L70 @ 50,000 Hrs	
<b>CRI</b>	90 +	
<b>Lumens/Watt</b>	66.8	
<b>Spacing Criteria</b>	0.58	

##### COEFFICIENT OF UTILIZATION - %

RCC %	80			50			30		
RWC %	50	30	50	30	50	30	50	30	
<b>RCR</b>	0	119	119	111	111	106	106	106	
	2	106	102	101	98	98	96	96	
	4	95	91	92	88	90	87	87	
	6	86	82	84	80	83	79	79	
	8	79	74	78	73	77	73	73	
	10	73	68	72	68	71	67	67	

##### Zonal Cavity Method

Effective Floor Cavity Reflectance 20%

##### ZONAL LUMEN SUMMARY

ZONE	LUMENS	%LUMINAIRE
0-30	1,209.3	88.6%
0-40	1,347.5	98.7%
0-60	1,361.3	99.7%
60-90	4.2	0.3%
0-90	1,365.5	100%

##### MULTIPLE UNIT DATA - (RCR 2)

SPACING ON CENTER	INITIAL FOOTCANDLES	WATTS/SQ. FT.
5'	67	0.90
6'	38	0.51
7'	26	0.35
8'	26	0.35
9'	17	0.23

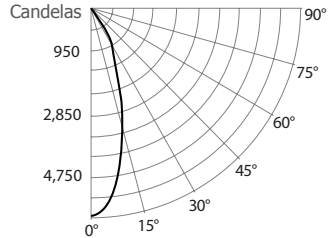
38' x 38' x 10' Room. Workplan located 2-1/2' (30").  
Reflection factor of 80%/50%/30%.

##### CANDELAS DISTRIBUTION

DEGREES/VERTICAL	CANDELAS	DEGREES/VERTICAL	CANDELAS
0	3,404	40	27
5	3,226	50	5
10	2,696	60	3
15	1,977	70	2
20	1,223	80	1
25	821	90	0
30	576		

#### 3,000K, 90 + of CRI, Narrow Flood, Performance 2

##### CANDLEPOWER DISTRIBUTION



##### LIGHT CONE

Distance	FC	DIA
06'	156.6	3.6'
08'	88.1	4.8'
10'	56.4	6.0'
12'	39.2	7.2'
14'	28.8	8.4'
16'	22.0	9.6'

Beam: 33.5°  
Beam Edge defined as 50% of Maximum Nadir Candelpower.

##### LUMINAIRE

<b>Modul-Aim Performance 2 LED</b>	3,000K	Narrow Flood
<b>CBCP / Lumens</b>	5,637	/ 2,261.7
<b>Watts</b>	<b>120V</b>	<b>277V</b>
	38.8W	39.3W
<b>Operating AMPS</b>	0.32A	0.14A
<b>Lumen Maintenance</b>	L70 @ 50,000 Hrs	
<b>CRI</b>	90 +	
<b>Lumens/Watt</b>	58.3	
<b>Spacing Criteria</b>	0.58	

##### COEFFICIENT OF UTILIZATION - %

RCC %	80			50			30		
RWC %	50	30	50	30	50	30	50	30	
<b>RCR</b>	0	119	119	111	111	106	106	106	
	2	106	102	101	98	98	96	96	
	4	95	91	92	88	90	87	87	
	6	86	82	84	80	83	79	79	
	8	79	74	78	73	77	73	73	
	10	73	68	72	68	71	67	67	

##### Zonal Cavity Method

Effective Floor Cavity Reflectance 20%

##### ZONAL LUMEN SUMMARY

ZONE	LUMENS	%LUMINAIRE
0-30	2,003.0	88.6%
0-40	2,232.0	98.7%
0-60	2,254.7	99.7%
60-90	7.0	0.3%
0-90	2,261.7	100%

##### MULTIPLE UNIT DATA - (RCR 2)

SPACING ON CENTER	INITIAL FOOTCANDLES	WATTS/SQ. FT.
5'	112	1.72
6'	63	0.97
7'	44	0.67
8'	44	0.67
9'	28	0.43

38' x 38' x 10' Room. Workplan located 2-1/2' (30").  
Reflection factor of 80%/50%/30%.

##### CANDELAS DISTRIBUTION

DEGREES/VERTICAL	CANDELAS	DEGREES/VERTICAL	CANDELAS
0	5,637	40	45
5	5,344	50	8
10	4,466	60	4
15	3,275	70	3
20	2,025	80	2
25	1,360	90	0
30	955		



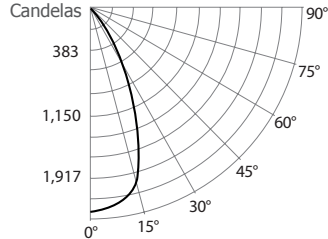
# Modul-Aim™

## REM0D

### PHOTOMETRIC DATA (CONT'D)

#### 3,000K, 90 + of CRI, Flood, Performance 1

##### CANDLEPOWER DISTRIBUTION



##### LIGHT CONE

Distance	FC	DIA
06'	62.4	5.3'
08'	35.1	7.1'
10'	22.5	8.9'
12'	15.6	10.6'
14'	11.5	12.4'
16'	8.8	14.2'

Beam: 47.8°  
Beam Edge defined as 50% of Maximum Nadir Candle-power.

##### LUMINAIRE

Modul-Aim Performance 1 LED	3,000K Flood
CBCP / Lumens	2,247 / 1,392.2
Watts	120V 277V 20.42W 20.92W
Operating AMPS	0.17A 0.07A
Lumen Maintenance	L70 @ 50,000 Hrs
CRI	90 +
Lumens/Watt	68.2
Spacing Criteria	0.81

##### COEFFICIENT OF UTILIZATION - %

RCC %	80			50			30		
RWC %	50	30	50	30	50	30	50	30	
RCR	0	119	119	111	111	106	106	106	
	2	105	101	100	98	97	95		
	4	94	89	91	87	89	85		
	6	84	79	82	78	81	77		
	8	76	71	75	70	74	70		
	10	70	64	68	64	68	64		

##### Zonal Cavity Method

Effective Floor Cavity Reflectance 20%

##### FLUX LUMINEUX ZONAL

ZONE	LUMENS	%LUMINAIRE
0-30	1,207.2	86.7%
0-40	1,378.9	99%
0-60	1,391.6	100%
60-90	0.6	0%
0-90	1,392.2	100%

##### MULTIPLE UNIT DATA - (RCR 2)

SPACING ON CENTER	INITIAL FOOTCANDLES	WATTS/SQ. FT.
5'	68	0.90
6'	38	0.51
7'	27	0.35
8'	27	0.35
9'	17	0.23

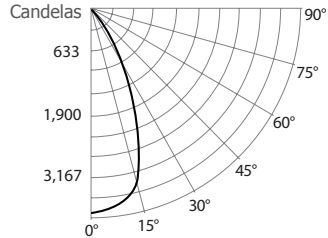
38' x 38' x 10' Room. Workplan located 2-1/2' (30").  
Reflection factor of 80%/50%/30%.

##### CANDELAS DISTRIBUTION

DEGREES/VERTICAL	CANDELAS	DEGREES/VERTICAL	CANDELAS
0	2,247	40	38
5	2,189	50	4
10	2,107	60	1
15	1,936	70	0
20	1,493	80	0
25	1,029	90	0
30	684		

#### 3,000K, 90 + of CRI, Flood, Performance 2

##### CANDLEPOWER DISTRIBUTION



##### LIGHT CONE

Distance	FC	DIA
06'	103.3	5.3'
08'	58.1	7.1'
10'	37.2	8.9'
12'	25.8	10.6'
14'	18.9	12.4'
16'	14.5	14.2'

Beam: 47.8°  
Beam Edge defined as 50% of Maximum Nadir Candle-power.

##### LUMINAIRE

Modul-Aim Performance 2 LED	3,000K Flood
CBCP / Lumens	3,719 / 2,304
Watts	120V 277V 37.7W 38.2W
Operating AMPS	0.31A 0.14A
Lumen Maintenance	L70 @ 50,000 Hrs
CRI	90 +
Lumens/Watt	61.1
Spacing Criteria	0.81

##### COEFFICIENT OF UTILIZATION - %

RCC %	80			50			30		
RWC %	50	30	50	30	50	30	50	30	
RCR	0	119	119	111	111	106	106	106	
	2	105	101	100	98	97	95		
	4	94	89	91	87	89	85		
	6	84	79	82	78	81	77		
	8	76	71	75	70	74	70		
	10	70	64	68	64	68	64		

##### Zonal Cavity Method

Effective Floor Cavity Reflectance 20%

##### FLUX LUMINEUX ZONAL

ZONE	LUMENS	%LUMINAIRE
0-30	1,997.9	86.7%
0-40	2,282	99%
0-60	2,303	100%
60-90	1.0	0%
0-90	2,304	100%

##### MULTIPLE UNIT DATA - (RCR 2)

SPACING ON CENTER	INITIAL FOOTCANDLES	WATTS/SQ. FT.
5'	113	1.67
6'	64	0.94
7'	44	0.65
8'	44	0.65
9'	28	0.42

38' x 38' x 10' Room. Workplan located 2-1/2' (30").  
Reflection factor of 80%/50%/30%.

##### CANDELAS DISTRIBUTION

DEGREES/VERTICAL	CANDELAS	DEGREES/VERTICAL	CANDELAS
0	3,719	40	62
5	3,622	50	7
10	3,488	60	2
15	3,203	70	0
20	2,472	80	0
25	1,703	90	0
30	1,131		

