

**Modul-Aim™**

ISMOD

Project

Notes

Fixture Type

Date

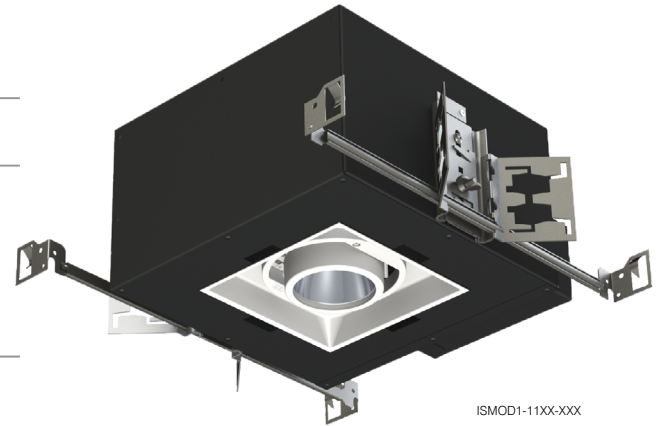
**Assembled Insulated Ceiling Housing**

## DESCRIPTION

Assembled Modul-Aim units for new construction in insulated ceilings, Offered in 1 or 2 head configurations.

## SPECIFICATIONS

**HOUSING DETAILS** Powder coated, 22 gauge 0.036" (0.91 mm) galvanized steel housing. Configured with butterfly brackets (Patent Pending) with mounting bars for fixed or suspended ceilings (included). Can fit in ceilings up to 1" (25 mm) thick. Perfect fit into ceiling. No light leakage. Junction box is accessible from below the ceiling for ease of maintenance.



**LIGHT ENGINE** **Standard:** Lumileds Luxeon CoB 1205 GEN3, delivers a lumen maintenance greater than 70% after 50,000 hours of operation ( $L_{70}$ ). Provides a high quality true color and a clean white light without hot spots. Color binning within 3 steps on MacAdam ellipse which surpasses ANSI binning requirements.

Offered in 2,700K, 3,000K, 3,500K and 4,000K. 90+ CRI (97 nominal).

Several driver models available offering 3 dimming options:

ELV: 120V to 277V (20W)

0-10V: 120V to 277V (20W)

Lutron Ecosystem addressable: 120V to 277V (20W)

**CrispWhite:**

Lumileds LUXEON CoB 1205 GEN2 with CrispWhite Technology delivers the warm saturated colors of high 90 + CRI solutions while creating the natural crisp whiteness required for merchandising. Offered in 3,000K only.

Several driver models available offering 3 dimming options:

ELV: 120V to 277V (20W)

0-10V: 120V to 277V (20W)

Lutron Ecosystem addressable: 120V to 277V (20W)

**Lumenetix Warm Dimming:**

Lumenetix Araya DDM1 Dynamic Dimming Module delivers dimmable white light that warms as it dims reproducing dimming conditions of a halogen lamp. It allows the user to change the color temperature from 3,050K at full intensity to 1,800K at minimum intensity all this while ensuring a 90+ CRI over the full dimming range. Lumenetix: 100V to 240V (20W)

**Lumenetix Color Tuning:**

Lumenetix Araya CTM1 Color Tuning Module allows the user to program millions of color combinations using a user friendly Bluetooth application available on iOS mobile devices. The application allows programming of different scenes, colors, and color temperatures while the day-to-day control is ensured by standard 0-10V wall mounted dimmers. 90+ CRI.

Lumenetix: 100V to 240V (20W)

## DELIVERED LUMENS

**Performance 1 (20W) Standard:** 1,426 lumens @ 3,000K, 71 lm/W

**Performance 1 (20W) "CrispWhite":** 2,361 lumens @ 3,000K, 59 lm/W

**Warm Dimming (WD) (20W):** 936 lumens @ 3,000K, 47 lm/W

**Color Tuning (CT) (20W):** 936 lumens @ 4,000K, 47 lm/W

**\* Average lumens output shown. Consult ies files on our Website for more details.**

**CONTRASTE**2019-01  
Revision 2

PRINTED IN CANADA

1009, rue du Parc Industriel  
Lévis (Québec) G6Z 1C5 Canada  
Tel.: 1-888-839-4624  
Fax.: 1-877-839-7057  
contrastelighting.com  
info@contrastelighting.com

© 2019 Contraste Lighting M.L. Inc.  
All rights reserved

Contrast Lighting M.L. Inc. reserves the right to make changes in specifications and/or to discontinue any product at any time without notice or obligation and will not be liable for any consequences resulting from the use of this publication.

**Modul-Aim™**

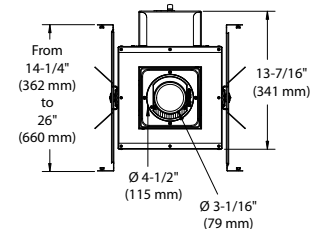
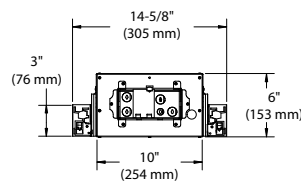
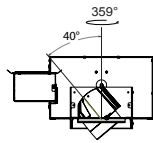
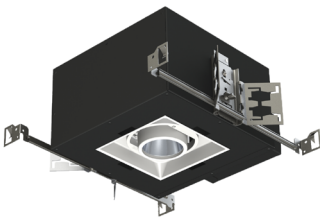
ISMOD

## SPECIFICATIONS (CONT'D)

UNIT FINISH	Powder coated: Matte White (-11) or Matte Black (-22)
OPTIC SYSTEM	Interchangeable optional optical reflectors and lenses available to customize your lighting.  <b>Choice of available lenses (also sold separately):</b> <b>Standard:</b> Clear <b>Clear (C)</b> <b>Frosted (F)</b> <b>Honeycomb (H):</b> the hexagonal louver reduces glare <b>Linear (L):</b> the linear lens directs the lamp beam to create a strip of light <b>Prismatic (P):</b> the prismatic lens diffuses and spreads the light in an even overall pattern  <b>Optical reflectors available:</b> <b>(Standard and CrispWhite)</b> <b>S:</b> Spot → 15° <b>MS:</b> Medium Spot → 19° <b>M:</b> Narrow Flood → 32° <b>W:</b> Flood → 45°  <i>* Average beams shown. Consult ies files on our Website for more details.</i>
ADJUSTABILITY	Swivel: 359° Tilt: 40° Locking device: Only one screw to lock both axis into position.
HEAT SINK	High quality aluminum injected heat sink ensuring maximum heat dissipation.
CEILING CUTOUT	<b>6-1/4" x 6-1/4" (159 mm x 159 mm) or 6-1/4" x 12-1/4" (159 mm x 312 mm)</b>
CERTIFICATION	<ul style="list-style-type: none"> <li>• cULus for <b>damp locations</b></li> <li>• Energy Star® certified</li> <li>• IC rated</li> </ul>
WARRANTY	1 year on components against manufacturing defects. 5 years on LED modules and drivers.

## ASSEMBLED MODELS

## ISMOD1

**CONTRASTE**2019-01  
Revision 2

PRINTED IN CANADA

1009, rue du Parc Industriel  
Lévis (Québec) G6Z 1C5 Canada  
Tel.: 1-888-839-4624  
Fax.: 1-877-839-7057  
contrastelighting.com  
info@contrastelighting.com© 2019 Contraste Lighting M.L. Inc.  
All rights reserved

Contrast Lighting M.L. Inc. reserves the right to make changes in specifications and/or to discontinue any product at any time without notice or obligation and will not be liable for any consequences resulting from the use of this publication.

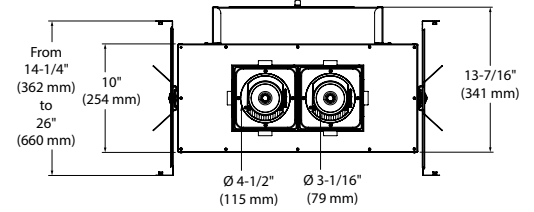
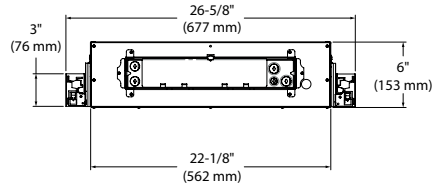
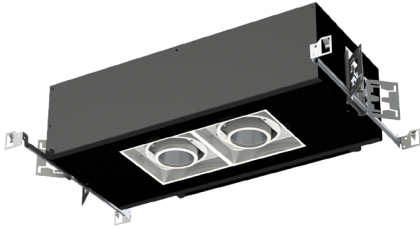


# Modul-Aim™

ISMOD

## ASSEMBLED MODELS (CONT'D)

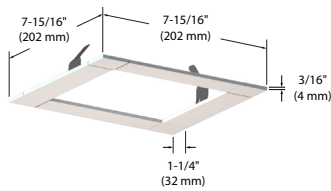
### ISMOD2



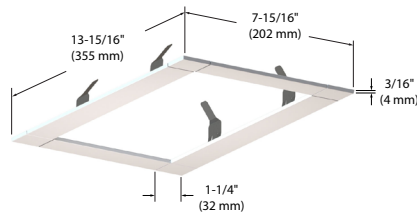
## TRIMS

Available finishes: Matte White (-11), Metallic Grey (-15) and Matte Black (-22)

### TRMOD1

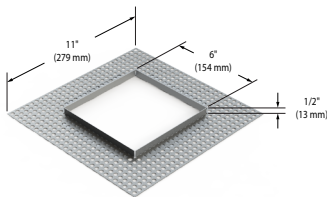


### TRMOD2

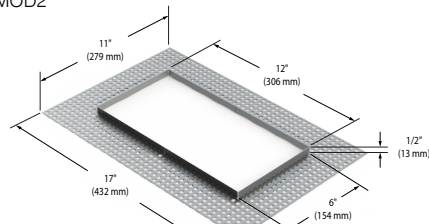


## MESH PLATE (Trimless)

### SFMOD1



### SFMOD2



## MASK

Available finishes: Matte White (-11) and Matte Black (-22)

### MASK1-11



### MASK1-22



# CONTRASTE

2019-01  
Revision 2

PRINTED IN CANADA

1009, rue du Parc Industriel  
Lévis (Québec) G6Z 1C5 Canada  
Tel.: 1-888-839-4624  
Fax.: 1-877-839-7057  
contrastelighting.com  
info@contrastelighting.com

© 2019 Contraste Lighting M.L. Inc.  
All rights reserved

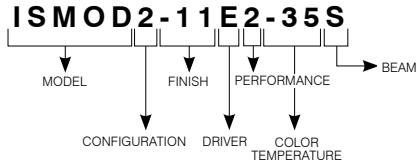
Contrast Lighting M.L. Inc. reserves the right to make changes in specifications and/or to discontinue any product at any time without notice or obligation and will not be liable for any consequences resulting from the use of this publication.



# Modul-Aim™

## ISMOD

### INSULATED CEILING UNIT WITH STANDARD LIGHT ENGINE CODIFICATION EXAMPLE

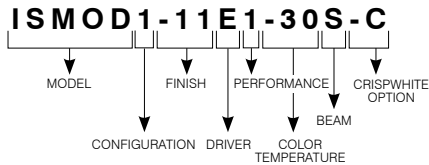


### ORDERING CODES for Insulated Ceiling Unit with Standard Light Engine

MODEL	CONFIGURATIONS	FINISHES	DRIVER	PERFORMANCE	COLOR TEMPERATURES	BEAMS	
<b>ISMOD</b>				<b>1</b>			
<b>ISMOD</b>	Insulated Ceiling	<b>1</b> 1 unit <b>2</b> 2 units	<b>-11</b> Matte White <b>-22</b> Matte Black	<b>E</b> ELV <b>D</b> 0-10V <b>A</b> Lutron Ecosystem Addressable	<b>1</b> 20W (1,426 Lumens delivered)	<b>-27</b> 2,700K <b>-30</b> 3,000K <b>-35</b> 3,500K <b>-40</b> 4,000K	<b>S</b> Spot (15°) <b>MS</b> Medium Spot (19°) <b>M</b> Narrow Flood (32°) <b>W</b> Flood (45°)

Trim, mask and trimless mesh plate to be ordered separately based on your configuration.

### INSULATED CEILING UNIT WITH CRISPWHITE TECHNOLOGY CODIFICATION EXAMPLE



### ORDERING CODES for Insulated Ceiling Unit with CrispWhite Technology

MODEL	CONFIGURATIONS	FINISHES	DRIVER	PERFORMANCE	COLOR TEMPERATURE	BEAM	CRISPWHITE OPTION
<b>ISMOD</b>				<b>1</b>	<b>-30</b>		<b>-C</b>
<b>ISMOD</b>	Insulated Ceiling	<b>1</b> 1 unit <b>2</b> 2 units	<b>-11</b> Matte White <b>-22</b> Matte Black	<b>E</b> ELV <b>D</b> 0-10V <b>A</b> Lutron Ecosystem Addressable	<b>1</b> 20W (1,195 Lumens delivered)	<b>-30</b> 3,000K	<b>S</b> Spot (15°) <b>MS</b> Medium Spot (19°) <b>M</b> Narrow Flood (32°) <b>W</b> Flood (45°) <b>-C</b> CrispWhite Technology

Trim, mask and trimless mesh plate to be ordered separately based on your configuration.

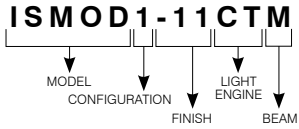


# Modul-Aim™

## ISMOD

INSULATED CEILING UNIT WITH LUMENETIX ENGINE

CODIFICATION EXAMPLE

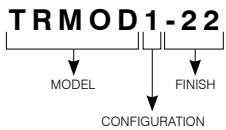


### ORDERING CODES for Insulated Ceiling Unit with Lumenetix Engine

MODEL	CONFIGURATIONS	FINISHES	LIGHT ENGINE	BEAM
<b>ISMOD</b>				
<b>ISMOD</b> Insulated Ceiling	<b>1</b> 1 unit <b>2</b> 2 units	<b>-11</b> Matte White <b>-22</b> Matte Black	<b>CT</b> Color Tuning <b>WD</b> Warm Dimming	<b>M</b> Narrow Flood (26°) <b>W</b> Flood (41°)

Trim, mask and trimless mesh plate to be ordered separately based on your configuration.

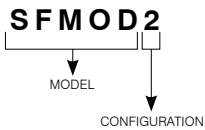
TRIM CODIFICATION EXAMPLE



### ORDERING CODES for Trim

MODEL	CONFIGURATIONS	FINISHES
<b>TRMOD</b>		
<b>TRMOD</b>	<b>1</b> 1 unit <b>2</b> 2 units	<b>-11</b> Matte White <b>-15</b> Metallic Grey <b>-22</b> Matte Black

MESH PLATE (TRIMLESS) CODIFICATION EXAMPLE



### ORDERING CODES for Mesh Plate (Trimless)

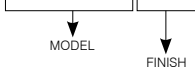
MODEL	CONFIGURATIONS
<b>SFMOD</b>	
<b>SFMOD</b>	<b>1</b> 1 unit <b>2</b> 2 units



**Modul-Aim™**

ISM0D

## MASK CODIFICATION EXAMPLE

**MASK1-11**

## ORDERING CODES for Mask

MODEL	FINISHES	
<b>MASK1</b>		
<b>MASK1</b>	<b>-11</b>	Matte White
	<b>-22</b>	Matte Black

## ORDERING CODES for replacement lenses and reflectors

For future on site modifications of the light distribution.

**Lenses (to modify light diffusion)**

Clear: **103105**  
 Frosted: **103189**  
 Honeycombs: **103822**  
 Linear: **103823**  
 Prismatic: **103824**

**Reflectors (to modify the beam angle)**

**\* Only with standard engine and CrispWhite technology**

For a Spot: **103737**  
 For a Medium Spot: **103738**  
 For a Narrow Flood: **103739**  
 For a Flood: **316545**

**CONTRASTE**

2019-01  
 Revision 2

PRINTED IN CANADA

1009, rue du Parc Industriel  
 Lévis (Québec) G6Z 1C5 Canada  
 Tel.: 1-888-839-4624  
 Fax.: 1-877-839-7057  
 contrastelighting.com  
 info@contrastelighting.com

© 2019 Contraste Lighting M.L. Inc.  
 All rights reserved

Contrast Lighting M.L. Inc. reserves the right to make changes in specifications and/or to discontinue any product at any time without notice or obligation and will not be liable for any consequences resulting from the use of this publication.



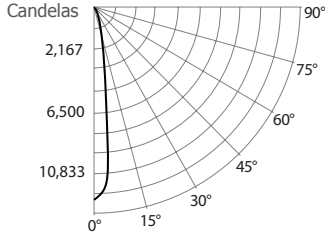
# Modul-Aim™

ISMOD

## PHOTOMETRIC DATA

### 3,000K, 90 + of CRI, Spot, Performance 1

#### CANDLEPOWER DISTRIBUTION



#### LIGHT CONE

Distance	FC	DIA
06'	334.8	1.5'
08'	188.3	2.0'
10'	120.5	2.5'
12'	83.7	3.0'
14'	61.5	3.5'
16'	47.1	4.0'

Beam: 14.2"  
Beam Edge defined as 50% of Maximum Nadir Candlepower.

#### LUMINAIRE

Modul-Aim Performance 1 LED	3,000K Spot
CBCP / Lumens	12,052 / 1,425.5
Watts	120V 277V 20.42W 21.92W
Operating AMPS	0.17A 0.07A
Lumen Maintenance	L70 @ 50,000 Hrs
CRI	90+
Lumens/Watt	69.8
Spacing Criteria	0.25

#### COEFFICIENT OF UTILIZATION - %

RCC %	80			50			30		
RWC %	50	30	50	30	50	30	50	30	
RCR	0	119	119	111	111	106	106	106	
	2	108	105	103	101	100	98		
	4	99	95	96	93	94	92		
	6	92	88	90	87	89	86		
	8	87	82	85	82	84	81		
	10	82	78	81	77	80	77		

#### Zonal Cavity Method

Effective Floor Cavity Reflectance 20%

#### ZONAL LUMEN SUMMARY

ZONE	LUMENS	%LUMINAIRE
0-30	1,288.4	90.4%
0-40	1,414.5	99.2%
0-60	1,425.5	100%
60-90	0	0%
0-90	1,425.5	100%

#### MULTIPLE UNIT DATA - (RCR 2)

SPACING ON CENTER	INITIAL FOOTCANDLES	WATTS/SQ. FT.
5'	72	0.90
6'	40	0.51
7'	28	0.35
8'	28	0.35
9'	18	0.23

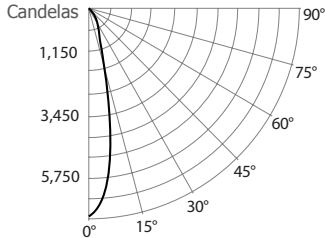
38' x 38' x 10' Room. Workplan located 2-1/2' (30").  
Reflection factor of 80%/50%/30%.

#### CANDELAS DISTRIBUTION

DEGREES/VERTICAL	CANDELAS	DEGREES/VERTICAL	CANDELAS
0	12,052	40	20
5	9,111	50	3
10	3,082	60	0
15	1,168	70	0
20	704	80	0
25	613	90	0
30	526		

### 3,000K, 90 + of CRI, Medium Spot, Performance 1

#### CANDLEPOWER DISTRIBUTION



#### LIGHT CONE

Distance	FC	DIA
06'	189.0	2.1'
08'	106.3	2.8'
10'	68.0	3.6'
12'	47.3	4.3'
14'	34.7	5.0'
16'	26.6	5.7'

Beam: 20.2"  
Beam Edge defined as 50% of Maximum Nadir Candlepower.

#### LUMINAIRE

Modul-Aim Performance 1 LED	3,000K Medium Spot
CBCP / Lumens	6,804 / 1,371.5
Watts	120V 277V 20.42W 20.92W
Operating AMPS	0.17A 0.07A
Lumen Maintenance	L70 @ 50,000 Hrs
CRI	90+
Lumens/Watt	67.2
Spacing Criteria	0.35

#### COEFFICIENT OF UTILIZATION - %

RCC %	80			50			30		
RWC %	50	30	50	30	50	30	50	30	
RCR	0	119	119	111	111	106	106	106	
	2	107	104	102	100	99	97		
	4	98	93	94	91	93	90		
	6	90	86	88	84	87	83		
	8	84	79	82	79	81	78		
	10	78	74	77	74	77	73		

#### Zonal Cavity Method

Effective Floor Cavity Reflectance 20%

#### ZONAL LUMEN SUMMARY

ZONE	LUMENS	%LUMINAIRE
0-30	1,226.6	89.4%
0-40	1,357.5	99%
0-60	1,371.5	100%
60-90	0	0%
0-90	1,371.5	100%

#### MULTIPLE UNIT DATA - (RCR 2)

SPACING ON CENTER	INITIAL FOOTCANDLES	WATTS/SQ. FT.
5'	68	0.90
6'	38	0.51
7'	27	0.35
8'	27	0.35
9'	17	0.23

38' x 38' x 10' Room. Workplan located 2-1/2' (30").  
Reflection factor of 80%/50%/30%.

#### CANDELAS DISTRIBUTION

DEGREES/VERTICAL	CANDELAS	DEGREES/VERTICAL	CANDELAS
0	6,804	40	31
5	5,901	50	4
10	3,448	60	0
15	1,477	70	0
20	851	80	0
25	626	90	0
30	520		



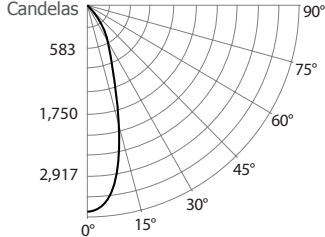
# Modul-Aim™

ISMOD

## PHOTOMETRIC DATA (CONT'D)

### 3,000K, 90 + of CRI, Narrow Flood, Performance 1

#### CANDLEPOWER DISTRIBUTION



#### LIGHT CONE

Distance	FC	DIA
06'	94.5	3.6'
08'	53.2	4.8'
10'	34.0	6.0'
12'	23.6	7.2'
14'	17.4	8.4'
16'	13.3	9.6'

Beam: 33.5°  
Beam Edge defined as 50% of Maximum Nadir Candlepower.

#### LUMINAIRE

<b>Modul-Aim Performance 1 LED</b>	3,000K	Narrow Flood
<b>CBCP / Lumens</b>	3,404	/ 1,365.5
<b>Watts</b>	<b>120V</b>	<b>277V</b>
	20.42W	20.92W
<b>Operating AMPS</b>	0.17A	0.07A
<b>Lumen Maintenance</b>	L70 @ 50,000 Hrs	
<b>CRI</b>	90 +	
<b>Lumens/Watt</b>	66.8	
<b>Spacing Criteria</b>	0.58	

#### COEFFICIENT OF UTILIZATION - %

RCC %	80			50			30		
RWC %	50	30	50	30	50	30	50	30	
<b>RCR</b>	0	119	119	111	111	106	106	106	
	2	106	102	101	98	98	96	96	
	4	95	91	92	88	90	87	87	
	6	86	82	84	80	83	79	79	
	8	79	74	78	73	77	73	73	
	10	73	68	72	68	71	67	67	

#### Zonal Cavity Method

Effective Floor Cavity Reflectance 20%

#### ZONAL LUMEN SUMMARY

ZONE	LUMENS	%LUMINAIRE
0-30	1,209.3	88.6%
0-40	1,347.5	98.7%
0-60	1,361.3	99.7%
60-90	4.2	0.3%
0-90	1,365.5	100%

#### MULTIPLE UNIT DATA - (RCR 2)

SPACING ON CENTER	INITIAL FOOTCANDLES	WATTS/SQ. FT.
5'	67	0.90
6'	38	0.51
7'	26	0.35
8'	26	0.35
9'	17	0.23

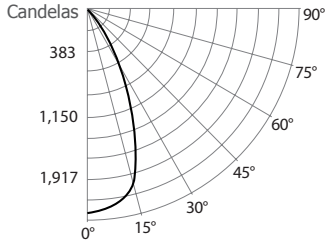
38' x 38' x 10' Room. Workplan located 2-1/2' (30").  
Reflection factor of 80%/50%/30%.

#### CANDELAS DISTRIBUTION

DEGREES/VERTICAL	CANDELAS	DEGREES/VERTICAL	CANDELAS
0	3,404	40	27
5	3,226	50	5
10	2,696	60	3
15	1,977	70	2
20	1,223	80	1
25	821	90	0
30	576		

### 3,000K, 90 + of CRI, Flood, Performance 1

#### CANDLEPOWER DISTRIBUTION



#### LIGHT CONE

Distance	FC	DIA
06'	62.4	5.3'
08'	35.1	7.1'
10'	22.5	8.9'
12'	15.6	10.6'
14'	11.5	12.4'
16'	8.8	14.2'

Beam: 47.8°  
Beam Edge defined as 50% of Maximum Nadir Candle-power.

#### LUMINAIRE

<b>Modul-Aim Performance 1 LED</b>	3,000K	Flood
<b>CBCP / Lumens</b>	2,247	/ 1,392.2
<b>Watts</b>	<b>120V</b>	<b>277V</b>
	20.42W	20.92W
<b>Operating AMPS</b>	0.17A	0.07A
<b>Lumen Maintenance</b>	L70 @ 50,000 Hrs	
<b>CRI</b>	90 +	
<b>Lumens/Watt</b>	68.2	
<b>Spacing Criteria</b>	0.81	

#### COEFFICIENT OF UTILIZATION - %

RCC %	80			50			30		
RWC %	50	30	50	30	50	30	50	30	
<b>RCR</b>	0	119	119	111	111	106	106	106	
	2	105	101	100	98	97	95	95	
	4	94	89	91	87	89	85	85	
	6	84	79	82	78	81	77	77	
	8	76	71	75	70	74	70	70	
	10	70	64	68	64	68	64	64	

#### Zonal Cavity Method

Effective Floor Cavity Reflectance 20%

#### FLUX LUMINEUX ZONAL

ZONE	LUMENS	%LUMINAIRE
0-30	1,207.2	86.7%
0-40	1,378.9	99%
0-60	1,391.6	100%
60-90	0.6	0%
0-90	1,392.2	100%

#### MULTIPLE UNIT DATA - (RCR 2)

SPACING ON CENTER	INITIAL FOOTCANDLES	WATTS/SQ. FT.
5'	68	0.90
6'	38	0.51
7'	27	0.35
8'	27	0.35
9'	17	0.23

38' x 38' x 10' Room. Workplan located 2-1/2' (30").  
Reflection factor of 80%/50%/30%.

#### CANDELAS DISTRIBUTION

DEGREES/VERTICAL	CANDELAS	DEGREES/VERTICAL	CANDELAS
0	2,247	40	38
5	2,189	50	4
10	2,107	60	1
15	1,936	70	0
20	1,493	80	0
25	1,029	90	0
30	684		

# CONTRASTE

2019-01  
Revision 2

PRINTED IN CANADA

1009, rue du Parc Industriel  
Lévis (Québec) G6Z 1C5 Canada  
Tel.: 1-888-839-4624  
Fax.: 1-877-839-7057  
contrastelighting.com  
info@contrastelighting.com

© 2019 Contraste Lighting M.L. Inc.  
All rights reserved

Contrast Lighting M.L. Inc. reserves the right to make changes in specifications and/or to discontinue any product at any time without notice or obligation and will not be liable for any consequences resulting from the use of this publication.

