

HexaLED 2.0

6" Series

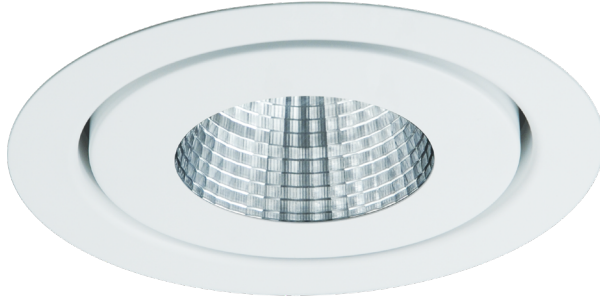
High-performance Controlled Beam Round Trim

Project _____

Notes _____

Fixture Type _____

Date _____



HEF-11XXXXXX (illustrated)



HED-11XXXXXX (illustrated)

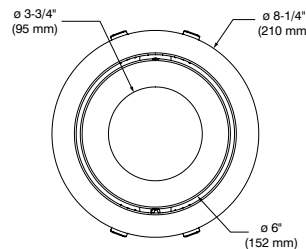
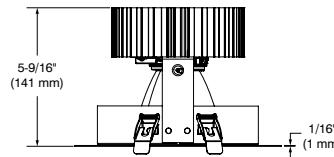
Contraste combined advanced technology LED components to create a new and powerful unit that will meet every specification project needs. Our new HexaLED will deliver the exact lumen output to meet the desired lighting performance that is suitable for a wide variety of architectural applications including retail stores, restaurants, hotels, office spaces, museums and art galleries, public areas and other interiors.



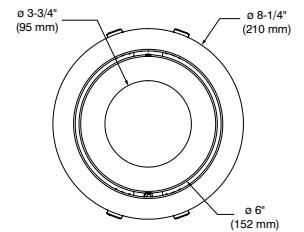
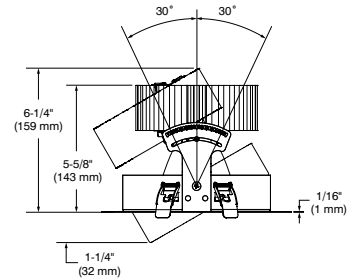
SPECIFICATIONS

TRIM DETAILS	<p>Requires a 6-3/4" (172 mm) clearance beyond the ceiling level</p> <p>Perfect fit into ceiling</p> <p>No light leak</p> <p>Each part of the housing and the trim should be at LEAST 3" (76 mm) from insulation (non-IC configurations)</p> <p>Can fit in ceilings up to 1-1/2" (38 mm) thick</p> <p>Junction box is accessible from below the ceiling for ease of maintenance</p>
AJUSTABILITY	Tilt: 30° (2.5° incremental adjustment) lockable
HEAT SINK	High-quality extruded aluminum heat sink ensuring maximum heat dissipation for optimal performance.
CEILING CUTOUT	ø 7-1/4" (184 mm)
CERTIFICATION	cULus E343977 for damp locations
WARRANTY	<p>1 year on components against manufacturing defects</p> <p>5 years on LED arrays and drivers</p>

FIXED



ADJUSTABLE



HexaLED 2.0

6" Series**High-performance Controlled Beam Round Trim**

SPECIFICATIONS (CONT'D)

LIGHT ENGINE

STANDARD (SOLID WHITE)

Lumileds Luxeon CoB 1211 GEN4

L₇₀ @ 50,000 hours of operation

3-Step MacAdam ellipse (3 SDCM)

Color Temperatures: 3,000K - 3,500K - 4,000K

CRI: 80+ and 90+ (R9: >50)

Delivered Lumens: Performance 20W (2,390 lumens)
 Performance 28W (3,280 lumens)
 Performance 36W (4,190 lumens)
 Performance 50W (5,340 lumens)

COMPATIBLE HOUSINGS

	Remodel Housing	New Construction Housing	New Construction Housing with Emergency Lighting
Performance 20W	REHEUE20W REHEUD20W REHEUA20W REHE3D20W	NWHEUE20W NWHEUD20W NWHEUA20W NWHE3D20W	NWHEUD20W-EM
Performance 28W	REHEUE28W REHEUD28W REHEUA28W REHE3D28W	NWHEUE28W NWHEUD28W NWHEUA28W NWHE3D28W	NWHEUD28W-EM
Performance 36W	REHEUE36W REHEUD36W REHEUA36W REHE3D36W	NWHEUE36W NWHEUD36W NWHEUA36W NWHE3D36W	NWHEUD36W-EM
Performance 50W	REHEUE50W REHEUD50W REHE3D50W	NWHEUE50W NWHEUD50W NWHE3D50W	NWHEUD50W-EM

Consult housing specification sheet for more details.

For dimming, please visit our Web site frequently to find our suggested compatible dimmers: www.contrastlighting.com

OPTIC SYSTEM

Choice of available lenses:Clear **(C)**Frosted **(F)****Optical reflectors available:** Spot, Narrow Flood, Flood**Standard**

Spot (S)	15°
Narrow Flood (M)	24°
Flood (L)	44°

*** Average beams shown. Consult .ies files on our Website for more details.**

TRIM FINISHES

Plated die-formed steel, with powder coating, Marine Grade option available. The center is adjustable incrementally.

Different finishes available:White **(-01)**, Matte White **(-11)**, Matte Black **(-22)** and Polar Grey **(-25)**

CONTRASTE

2020-05
Revision 4

PRINTED IN CANADA

1009, rue du Parc Industriel
 Lévis (Québec) G6Z 1C5 Canada
 Tel.: 1-888-839-4624
 Fax.: 1-877-839-7057
 contrastlighting.com
 info@contrastlighting.com

© 2020 Contrast Lighting M.L. Inc.
 All rights reserved

Contrast Lighting M.L. Inc. reserves the right to make changes in specifications and/or to discontinue any product at any time without notice or obligation and will not be liable for any consequences resulting from the use of this publication.

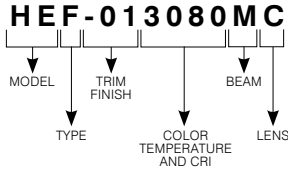
HexaLED 2.0

6" Series

High-performance Controlled Beam Round Trim



CODIFICATION EXAMPLE



ORDERING CODES

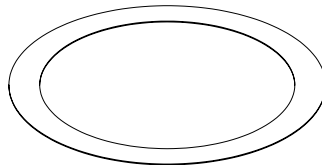
MODEL	TYPE	TRIM FINISHES	COLOR TEMPERATURES AND CRI	BEAMS	LENSES
HE					
HE	F Fixed	-01 White	3080 3,000K (80+ CRI)	S Spot (15°)	C Clear
	D Adjustable	-11 Matte White	3580 3,500K (80+ CRI)	M Narrow Flood (24°)	F Frosted
		-22 Matte Black	4080 4,000K (80+ CRI)	L Flood (44°)	
		-25 Polar Grey	3090 3,000K (90+ CRI)		
			3590 3,500K (90+ CRI)		
			4090 4,000K (90+ CRI)		

GOOF RINGS

Goof rings will help you fix larger than necessary or damaged ceiling cutouts.

- Code: **RR7-01** (white)
- RR7-11** (matte white)
- RR7-22** (matte black)
- RR7-25** (polar grey)

Outside diameter: ø 9" (229 mm)
 Inside diameter: ø 7-1/4" (184 mm)



HexaLED 2.0

6" Series**High-performance Controlled Beam Round Trim**

PHOTOMETRIC DATA



In order to obtain the accurate photometric data, multiply the lumens relative to your product selection by the applicable factor(s). Take note these factors also need to be implemented in the .ies files available on our website.

With Performance 20W

	Spot (15°)		Narrow Flood (24°)		Flood (44°)	
	lm	lm/W	lm	lm/W	lm	lm/W
3,000K with 80+ CRI	2,201	110.1	2,249	112.5	2,269	113.4
3,500K with 80+ CRI	2,244	112.3	2,294	114.7	2,315	115.8
4,000K with 80+ CRI	2,318	116.0	2,370	118.5	2,390	119.6
3,000K with 90+ CRI	1,890	94.4	1,932	96.5	1,949	97.5
3,500K with 90+ CRI	1,928	96.3	1,971	98.6	1,989	99.5
4,000K with 90+ CRI	1,992	99.5	2,035	101.8	2,054	102.7

With Performance 28W

	Spot (15°)		Narrow Flood (24°)		Flood (44°)	
	lm	lm/W	lm	lm/W	lm	lm/W
3,000K with 80+ CRI	3,019	107.8	3,086	110.2	3,114	111.2
3,500K with 80+ CRI	3,079	110.0	3,148	112.5	3,176	113.4
4,000K with 80+ CRI	3,181	113.6	3,251	116.1	3,280	117.1
3,000K with 90+ CRI	2,593	92.6	2,651	94.7	2,675	95.5
3,500K with 90+ CRI	2,645	94.4	2,704	96.6	2,729	97.5
4,000K with 90+ CRI	2,733	97.6	2,793	99.8	2,819	100.6

With Performance 36W

	Spot (15°)		Narrow Flood (24°)		Flood (44°)	
	lm	lm/W	lm	lm/W	lm	lm/W
3,000K with 80+ CRI	3,856	107.1	3,941	109.4	3,977	110.5
3,500K with 80+ CRI	3,933	109.2	4,020	111.7	4,057	112.7
4,000K with 80+ CRI	4,064	112.8	4,153	115.3	4,190	116.4
3,000K with 90+ CRI	3,313	92.0	3,386	94.1	3,416	94.9
3,500K with 90+ CRI	3,379	93.8	3,453	96.0	3,485	96.8
4,000K with 90+ CRI	3,490	96.9	3,568	99.1	3,600	99.9

CONTRASTE

2020-05
Revision 4

PRINTED IN CANADA

1009, rue du Parc Industriel
Lévis (Québec) G6Z 1C5 Canada
Tel.: 1-888-839-4624
Fax.: 1-877-839-7057
contrastlighting.com
info@contrastlighting.com

© 2020 Contrast Lighting M.L. Inc.
All rights reserved

Contrast Lighting M.L. Inc. reserves the right to make changes in specifications and/or to discontinue any product at any time without notice or obligation and will not be liable for any consequences resulting from the use of this publication.

HexaLED 2.0

6" Series**High-performance Controlled Beam Round Trim**

PHOTOMETRIC DATA

**With Performance 50W**

	Spot (15°)		Narrow Flood (24°)		Flood (44°)	
	lm	lm/W	lm	lm/W	lm	lm/W
3,000K with 80+ CRI	4,944	100.9	5,054	103.1	5,100	104.1
3,500K with 80+ CRI	5,043	102.9	5,156	105.2	5,201	106.2
4,000K with 80+ CRI	5,208	106.4	5,324	108.7	5,340	109.7

3,000K with 90+ CRI	4,248	86.7	4,341	88.6	4,381	89.4
3,500K with 90+ CRI	4,333	88.4	4,429	90.4	4,468	91.2
4,000K with 90+ CRI	4,476	91.4	4,575	93.4	4,616	94.2

Lenses Factor	
C	1
F	0.71

CONTRASTE

2020-05
Revision 4

PRINTED IN CANADA

1009, rue du Parc Industriel
Lévis (Québec) G6Z 1C5 Canada
Tel.: 1-888-839-4624
Fax.: 1-877-839-7057
contrastlighting.com
info@contrastlighting.com

© 2020 Contrast Lighting M.L. Inc.
All rights reserved

Contrast Lighting M.L. Inc. reserves the right to make changes in specifications and/or to discontinue any product at any time without notice or obligation and will not be liable for any consequences resulting from the use of this publication.

HexaLED 2.0

6" Series

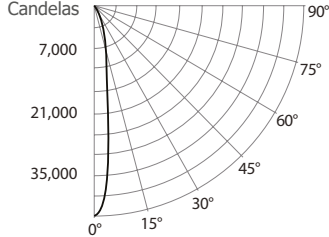
High-performance Controlled Beam Round Trim

PHOTOMETRIC DATA



4,000K, 80+ CRI, Spot, Performance 50W

CANDLEPOWER DISTRIBUTION



LIGHT CONE

Distance	FC	DIA
10'	418.4	2.5'
20	104.6	5.0'
30'	46.49	7.4'
40'	26.15	9.9'
50'	16.74	12.4'

Beam: 14.1"
Beam Edge defined as 50% of Maximum Nadir Candle-power.

LUMINAIRE

Performance 50W LED	4,000K	Spot
CBCP / Lumens	41,840	5,207.5
Watts	120V	277V
	50W	50.5W
Operating AMPS	0.42A	0.18A
Lumen Maintenance	L70 @ 50,000 Hrs	
CRI	80+	
Lumens/Watt	104	
Spacing Criteria	0.07	

COEFFICIENT OF UTILIZATION - %

Ceiling Reflect %	80			50			30			
Wall Reflect %	50	30	50	30	50	30	50	30	50	30
RCR	0	119	119	111	111	106	106	106	106	106
	2	108	105	103	101	101	99	99	99	99
	4	100	96	97	94	95	93	93	93	93
	6	94	90	92	89	91	88	88	88	88
	8	88	85	87	84	86	83	83	83	83
	10	84	80	83	80	82	79	79	79	79

Zonal Cavity Method

Effective Floor Cavity Reflectance 20%

ZONAL LUMEN SUMMARY

ZONE	LUMENS	%LUMINAIRE
0-30	5,083.5	97.6%
0-40	5,193.1	99.7%
0-60	5,207.5	100%
60-90	0.0	0%
0-90	5,207.5	100%

MULTIPLE UNIT DATA - (RCR 2)

SPACING ON CENTER	INITIAL FOOTCANDLES	WATTS/SQ. FT.
5'	33	0.28
6'	29	0.24
7'	49	0.42
8'	41	0.35
9'	41	0.35

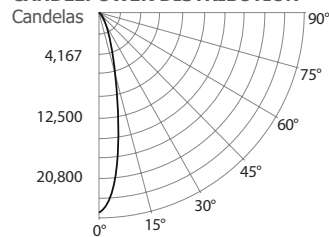
38' x 38' x 10' Room. Workplan located 2-1/2' (30").
Reflectance factor 80%/50%/30%

CANDELAS DISTRIBUTION

DEGREES/VERTICAL	CANDELAS	DEGREES/VERTICAL	CANDELAS
0	41,840	40	55
5	32,690	50	0
10	12,063	60	0
15	6,109	70	0
20	4,219	80	0
25	2,187	90	0
30	649		

4,000K, 80+ CRI, Narrow Flood, Performance 50W

CANDLEPOWER DISTRIBUTION



LIGHT CONE

Distance	FC	DIA
10'	242.63	4.2'
20'	60.66	8.3'
30'	26.96	12.5'
40'	15.16	16.6'
50'	9.71	20.8'

Beam: 23.5"
Beam Edge defined as 50% of Maximum Nadir Candle-power.

LUMINAIRE

Performance 50W LED	4,000K	Narrow Flood
CBCP / Lumens	24,263	5,324.0
Watts	120V	277V
	50W	50.5W
Operating AMPS	0.42A	0.18A
Lumen Maintenance	L70 @ 50,000 Hrs	
CRI	80+	
Lumens/Watt	106.5	
Spacing Criteria	0.10	

COEFFICIENT OF UTILIZATION - %

Ceiling Reflect %	80			50			30			
Wall Reflect %	50	30	50	30	50	30	50	30	50	30
RCR	0	119	119	111	111	106	106	106	106	106
	2	108	105	103	101	100	98	98	98	98
	4	99	95	96	93	94	91	91	91	91
	6	92	88	90	86	89	86	86	86	86
	8	86	82	85	81	84	81	81	81	81
	10	81	77	80	76	79	76	76	76	76

Zonal Cavity Method

Effective Floor Cavity Reflectance 20%

ZONAL LUMEN SUMMARY

ZONE	LUMENS	%LUMINAIRE
0-30	5,158.5	96.9%
0-40	5,319.8	99.9%
0-60	5,324.0	100%
60-90	0.0	0%
0-90	5,324.0	100%

MULTIPLE UNIT DATA - (RCR 2)

SPACING ON CENTER	INITIAL FOOTCANDLES	WATTS/SQ. FT.
5'	33	0.28
6'	29	0.24
7'	50	0.42
8'	42	0.35
9'	42	0.35

38' x 38' x 10' Room. Workplan located 2-1/2' (30").
Reflectance factor 80%/50%/30%

CANDELAS DISTRIBUTION

DEGREES/VERTICAL	CANDELAS	DEGREES/VERTICAL	CANDELAS
0	24,263	40	23
5	21,212	50	1
10	14,538	60	0
15	8,082	70	0
20	4,247	80	0
25	2,437	90	0
30	955		

HexaLED 2.0

6" Series

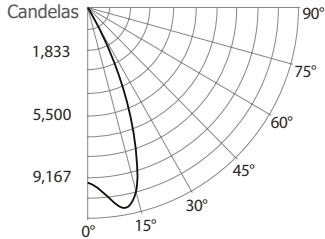
High-performance Controlled Beam Round Trim

PHOTOMETRIC DATA



4,000K, 80+ CRI, Flood, Performance 50W

CANDLEPOWER DISTRIBUTION



LIGHT CONE

Distance	PB	DIA
10'	92.02	8.2'
20'	23.02	16.3'
30'	10.23	24.5'
40'	5.76	32.7'
50'	3.68	40.9'

Beam: 44.5°
Beam Edge defined as 50% of Maximum Nadir Candle-power.

LUMINAIRE

Performance 50W LED	4,000K Flood	
CBCP / Lumens	9,209	/ 5,339.8
Watts	120V	277V
	50W	50.5W
Operating AMPS	0.42A	0.18A
Lumen Maintenance	L70 @ 50,000 Hrs	
CRI	80+	
Lumens/Watt	106,7	
Spacing Criteria	0.19	

COEFFICIENT OF UTILIZATION - %

Ceiling Reflect %	80		50		30		
Wall Reflect %	50	30	50	30	50	30	
RCR	0	119	119	111	111	106	106
	2	106	103	101	99	99	97
	4	96	92	93	90	91	88
	6	88	83	86	82	84	81
	8	81	76	79	75	78	75
	10	75	70	73	69	73	69

Zonal Cavity Method

Effective Floor Cavity Reflectance 20%

ZONAL LUMEN SUMMARY

ZONE	LUMENS	%LUMINAIRE
0-30	5,121.3	95.9%
0-40	5,333.2	99.9%
0-60	5,339.1	100%
60-90	0.7	0%
0-90	5,339.8	100%

MULTIPLE UNIT DATA - (RCR 2)

SPACING ON CENTER	INITIAL FOOTCANDLES	WATTS/SQ. FT.
5'	33	0.28
6'	29	0.24
7'	50	0.42
8'	41	0.35
9'	41	0.35

38' x 38' x 10' Room. Workplan located 2-1/2' (30").
Reflectance factor 80%/50%/30%

CANDELAS DISTRIBUTION

DEGREES/ VERTICAL	CANDELAS	DEGREES/ VERTICAL	CANDELAS
0	9,209	40	26
5	9,827	50	1
10	10,420	60	0
15	9,636	70	0
20	6,837	80	0
25	3,452	90	0
30	1,107		