

Remodel Housing for LED lamps & MR16 (Halogen) 3-1/2" and 4" (GU10/MR16/PAR20)

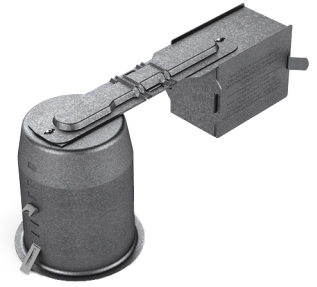
FOR INSTALLATION IN A CEILING WITH INSULATION
SUITABLE FOR DAMP LOCATION / WET WITH SHOWER TRIM

"IC" Type and Air Tight

RE35GU10-10W, RE35MR16-120-10W, RE35MR16-277-10W,
RE40GU10-10W, RE40MR16-120-10W, RE40MR16-277-10W,
RE40PAR-10W

"NON-IC" Type and NON Air Tight

RE35MR16-120-37W, RE35MR16-277-37W,
RE40MR16-120-37W, RE40MR16-277-37W

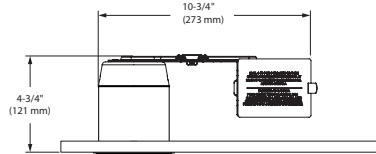


RE35GU10-10WQC, RE35MR16-120-10WQC, RE35MR16-277-10WQC,
RE40GU10-10WQC, RE40MR16-120-10WQC, RE40MR16-277-10WQC,
RE40PAR-10WQC

RE35MR16-120-37WQC, RE35MR16-277-37WQC,
RE40MR16-120-37WQC, RE40MR16-277-37WQC

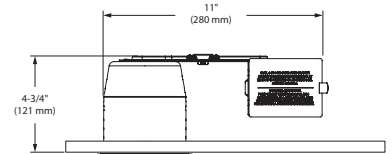
RE35 Model

Minimum ceiling clearance
required for the installation
of this housing:
4-3/4" x 10-3/4"



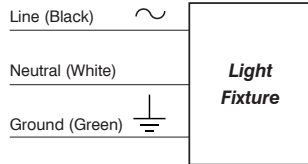
RE40 Model

Minimum ceiling clearance
required for the installation
of this housing:
4-3/4" x 11"

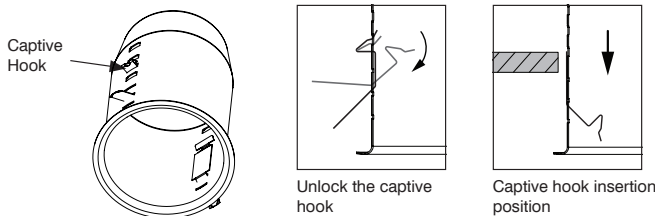


1. **SHUT OFF ELECTRICAL SUPPLY AT SOURCE.**
2. Bring the electrical wiring to the housing as per applicable local electrical codes.
3. Cut a hole in the ceiling of:
3-1/2" Series: **ø 3-5/8" (92 mm)**
4" Series: **ø 4-1/4" (108 mm)**
4. Open the junction box by pushing on the spring latch. Remove the appropriate knockout(s) to accommodate your wiring. Connect the wires coming from the power supply to the junction box wires, and match colors together (see wiring diagram below). Close the junction box by replacing the cover.
IMPORTANT: Leave an extra length of 6" of supply leads and ground wire inside the junction box before closing.

Wiring Diagram



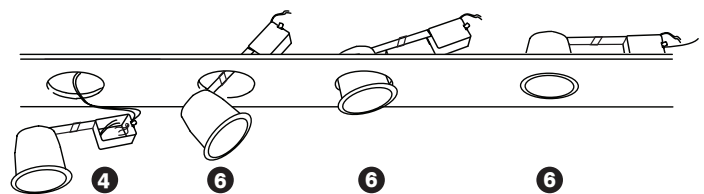
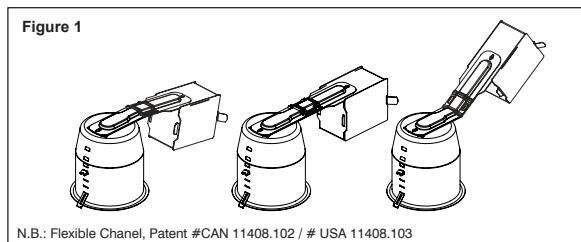
5. Unlock the upper part of the can captive hooks in order to release them. Use the various adjustment holes on each side of the can and adjust the position of the captive hooks according to the ceiling thickness.



Note: Captive hooks are preinstalled for 1-3/8" (35 mm) ceiling thickness. Adjustment possibility up to a maximum of 2" (51 mm) ceiling thickness.

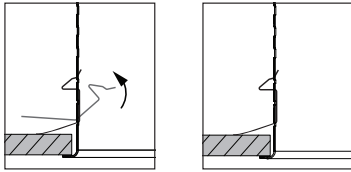


6. Insert housing through the ceiling opening. Flexible channel wire bracket bending (up to 45° MAX) for ease of installation in confined space (see figure 1).



N.B.: Flexible Chanel, Patent #CAN 11408.102 / # USA 11408.103

- Lock the captive hooks and make sure the hooks apply a pressure against the ceiling to maintain the can firmly in place.



Lock the captive hook

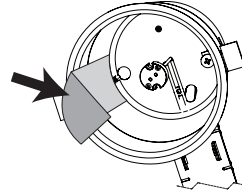
Final position of captive hook

INSTALLATION OF ALUMINUM TAPE (EXCEPT 37W HOUSING)

- Remove the film on the back of the included aluminum tape.
- Apply the aluminum tape on both sides of the can in order to cover the hooks opening.
- For lamps GU10, MR16 and PAR20 fixed model, follow these steps.

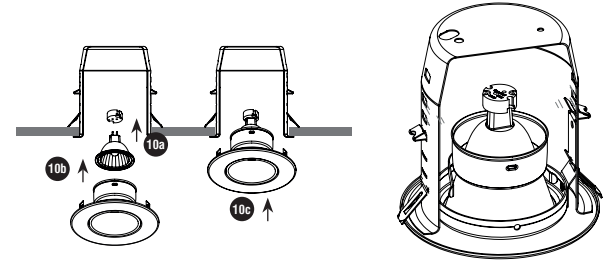
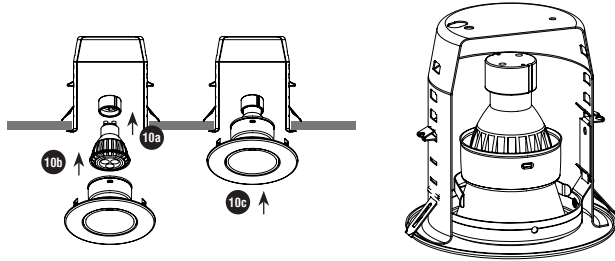
- Insert: a) the lamp into the socket
 b) the lamp into the trim
 c) the trim into the housing

For lamps PAR20 adjustable model, start by removing the socket.



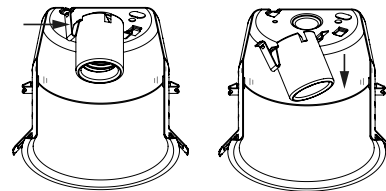
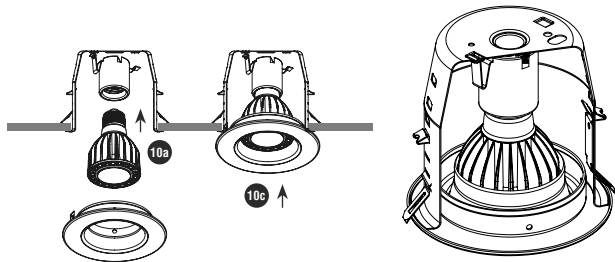
GU10

MR16



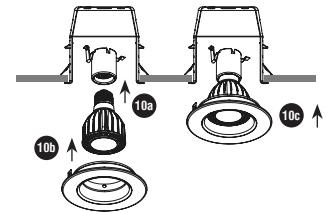
PAR20 (fixed model)

PAR20 (adjustable model)



Press the spring to release the socket.

Pull on the socket.



Please keep these instructions for maintenance reference.



WARNING

The use of other company's (non-Contraste) products or components (e. g. trims) in conjunction with Contrast Lighting M.L. Inc. products may not be covered by UL approvals and could be hazardous. Such use automatically voids all Contrast Lighting M.L. Inc. warranty and responsibility of these products.



WARNING: RISK OF FIRE

Most dwellings built before 1985 have supply wires rated 60° C. Consult a qualified electrician before installing.



WARRANTY: CONTRAST LIGHTING M. L. INC. guarantees the components against manufacturing defects for a period of one (1) year, under normal use with proof of purchase. The obligation of the manufacturer consists in the cost of the components and does not cover the cost of labor and transport for replacement. For all claims, please contact your local supplier. See our Web site for additional warranty details.

CONTRASTE

1009, rue du Parc Industriel
 Lévis (Québec) G6Z 1C5 Canada

Tel.: 1-888-839-4624
 Fax.: 1-877-839-7057

contrastlighting.com
 info@contrastlighting.com

© 2020 Contrast Lighting M.L. Inc.
 All rights reserved

EC717
 104934