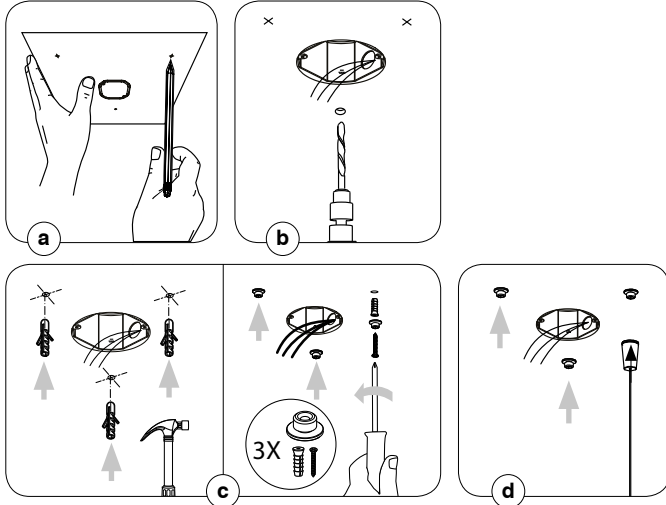


Salt

Suspension System

1. SHUT OFF THE ELECTRICAL SUPPLY AT SOURCE
2. ANCHOR INSTALLATION ON CEILING

- a) Align and mark anchor holes using drilling template included to center the junction box properly.
- b) Drill holes using template.
- c) Install anchor using included hardware.
- d) Install support cables on anchor fixed to ceiling.

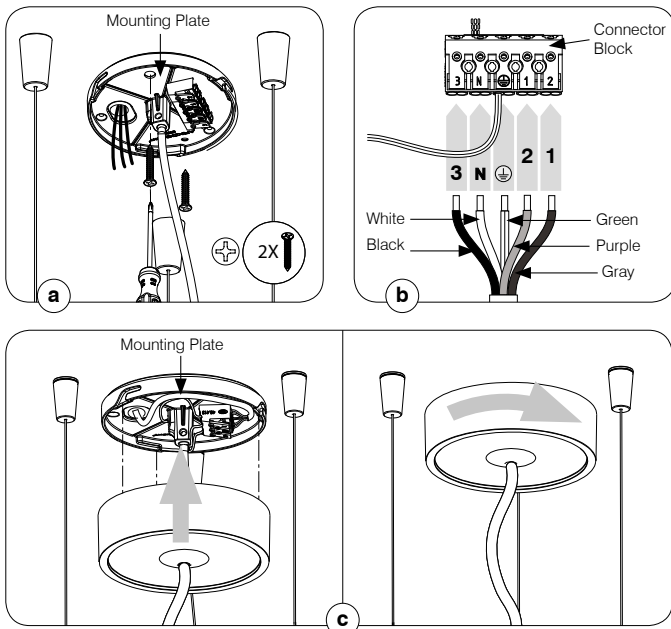


NOTE: POWER SUPPLY ADJUSTEMENT (OPTIONAL)

- a) Open the canopy and disconnect power supply cable from block.
- b) Cut Power supply cable to desired length.
- c) Strip cable 1" and wires 1/4"
- d) Connect wires to connector block according to the wiring diagram.

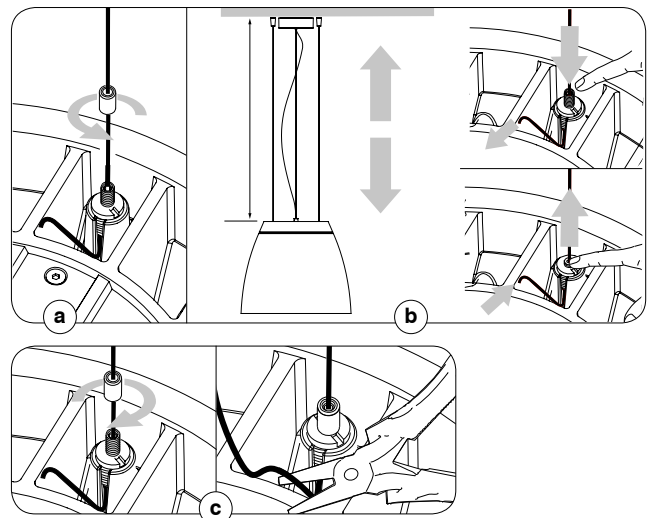
3. ELECTRICAL CONNECTIONS

- a) Twist to open canopy cover and bring the electrical supply wires, the 0-10V wires if necessary and pass them through the hole in the canopy mounting plate. Screw the mounting plate to the junction box.
- b) Connect the wires you just passed to connector block. Respect the wiring diagram below. Color codes: black/black, white white and green/green. For 0-10V control purple/purple and grey/grey.
- c) Put back in place canopy cover (twist & lock).



4. LAMPSHADE HEIGHT ADJUSTMENT

- a) Unlock the adjustable anchors on the top of the shade, unscrew partially.
- b) Adjust height by pushing on the anchor to release tension.
- c) Screw the anchor to lock in place. Cut the excess support cable.
- d) Turn on the electrical supply.



Please keep these instructions for future reference.

WARNING
The use of other company's (non-Contraste) products or components (e. g. trims) in conjunction with Contraste Lighting M.L. Inc. products may not be covered by UL approvals and could be hazardous. Such use automatically voids all Contrast Lighting M.L. Inc. warranty and responsibility of these products.

WARNING: RISK OF FIRE
Most dwellings built before 1985 have supply wires rated 60° C. Consult a qualified electrician before installing.
It is very important not to exceed the lamp's indicated wattage.



WARRANTY: CONTRAST LIGHTING M. L. INC. guarantees the components against manufacturing defects for a period of one (1) year, under normal use with proof of purchase. The obligation of the manufacturer consists in the cost of the components and does not cover the cost of labor and transport for replacement. For all claims, please contact your local supplier. See our Web site for additional warranty details.