

INSTALLATION INSTRUCTIONS

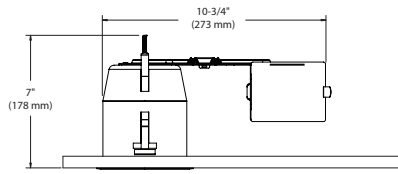
Remodel Housing «IC» and Airtight for LED lamp - 4" (PAR16/PAR20)

FOR INSTALLATION IN INSULATED CEILING (EXCEPT POLYURETHANE)

SUITABLE FOR DAMP LOCATIONS

CA2000-LED

A 7" minimum clearance inside the ceiling is required to ensure proper housing installation.



1. SHUT OFF ELECTRICAL SUPPLY AT SOURCE.

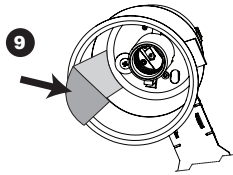
- Bring the electrical wiring in the ceiling respecting local electrical codes.
- Cut a hole in the ceiling: \varnothing 4-1/4" (108 mm)
- Remove the junction box cover by pushing on the spring latch. Remove the appropriate knockout(s) to accommodate your wiring. Remove the aluminum tape and store it safely for use in step 8. Connect the wires coming from the power supply to the junction box wires, and match colors together (White/White, Black/Black, Green/Green, see **Wiring figure**). Close the junction box.

IMPORTANT: Leave an extra length of 6" of supply leads and ground wire inside the junction box.

- Push the fastening hooks inside the housing through the lateral opening. Slide the housing into position. Flexible channel wire bracket bending (up to 45° MAX) for ease of installation in confined space (see **figure 1**).
- Push fastening hooks outside the housing through the lateral openings.
- Fasten the housing with the adjustment screws.

INSTALLATION OF ALUMINUM TAPE

- Remove the film on the back of the included aluminum tape.
- Apply the aluminum tape inside the housing as to entirely cover hooks openings on both sides of the housing.

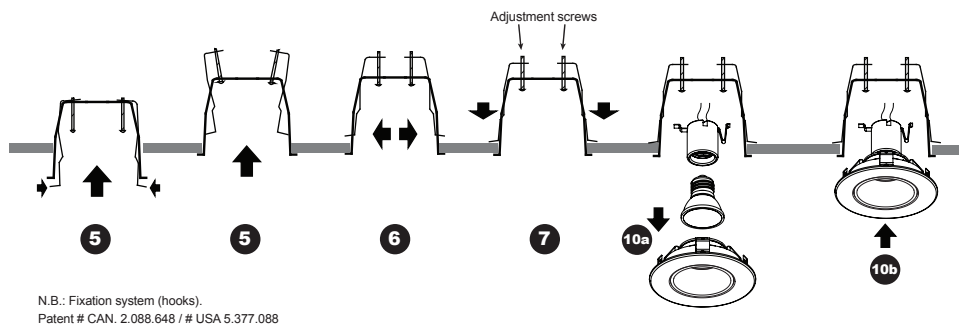


10. For PAR16 LED or Adjustable PAR20 LED

- Insert the lamp into the socket.
- Insert the lamp into the trim and insert the trim into the housing.

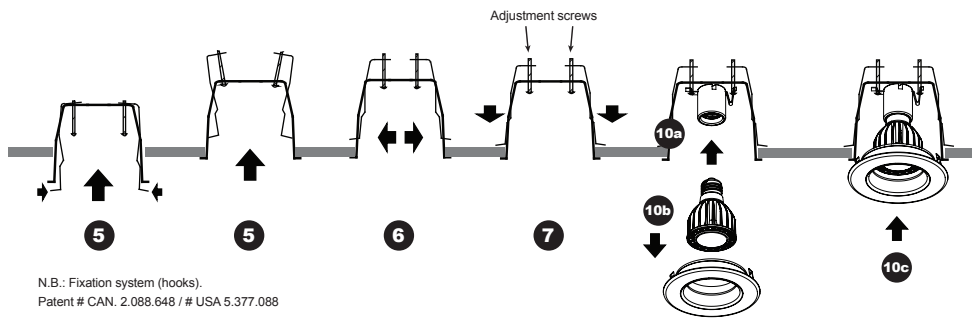
**Do not install the supplied lens.*

Adjustable PAR16 LED and PAR20 LED



N.B.: Fixation system (hooks).
Patent # CAN. 2.088.648 / # USA 5.377.088

Downlight PAR20 LED



N.B.: Fixation system (hooks).
Patent # CAN. 2.088.648 / # USA 5.377.088

Please keep these instructions for maintenance reference.



WARNING - The use of other company's (non-Contrast) products or components (ex. trims) in conjunction with Contrast products may not be covered by UL approvals, and could be hazardous. Such use automatically voids all Contrast warranty and responsibility of these products.

This product was designed for PAR16 LED or PAR20 LED lamps. If you want to use a dimmer, please refer regularly to the lamp manufacturer dimmer compatibility list.



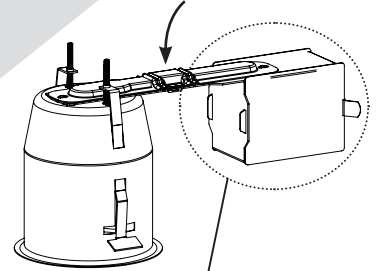
WARNING: RISK OF FIRE

Most dwellings built before 1985 have supply wires rated 60° C. Consult a qualified Electrician before installing.



It is very important not to exceed the lamp wattage indicated.

Flexible channel wire bracket



Wiring figure

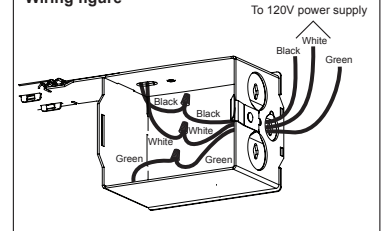
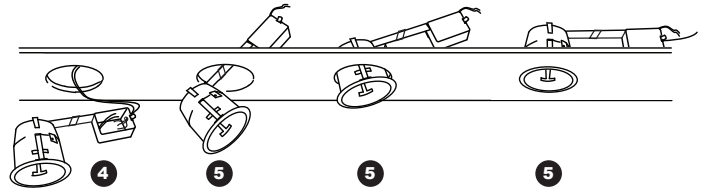
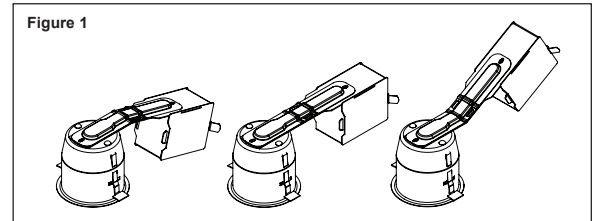


Figure 1



For Downlight PAR20 LED

- Attach the socket in the housing while ensuring that there is no wires between the socket and the housing.
- Insert the lamp into the socket.
- Insert the trim into the housing.



WARRANTY: CONTRAST LIGHTING M. L. INC. guarantees the components against manufacturing defects for a period of one (1) year, under normal use with proof of purchase. The obligation of the manufacturer consists in the cost of the components and does not cover the cost of labor and transport for replacement. For all claims, please contact your local supplier. See our Web site for additional warranty details.

CONTRAST
LIGHTING

CONTRAST LIGHTING M. L. INC.
1009 RUE DU PARC-INDUSTRIEL
LÉVIS QC G6Z 1C5
CANADA

Tel: 1-888-839-4624
Fax: 1-877-839-7057
info@contrastlighting.com
www.contrastlighting.com

© 2015 Contrast Lighting M.L. Inc.
All rights reserved
EC643 - 103708
PRINTED IN CANADA
2015-02